



HAL
open science

Institut Pasteur's flowchart template about legal issues related to reuse or re-utilization of research data

Emilie Cotte, Fanny Sébire

► To cite this version:

Emilie Cotte, Fanny Sébire. Institut Pasteur's flowchart template about legal issues related to reuse or re-utilization of research data. 2022. pasteur-03587214

HAL Id: pasteur-03587214

<https://hal-pasteur.archives-ouvertes.fr/pasteur-03587214>

Submitted on 24 Feb 2022

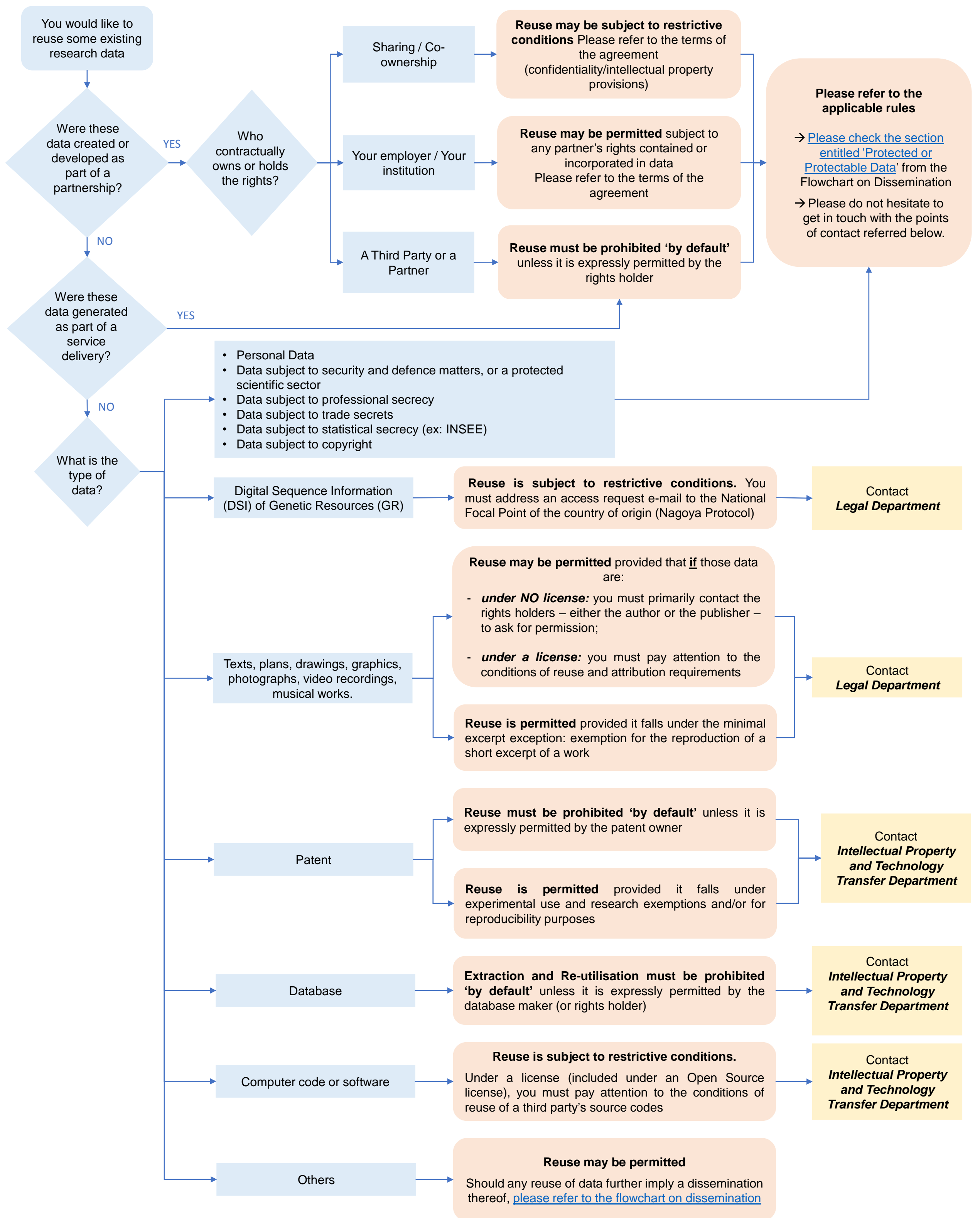
HAL is a multi-disciplinary open access archive for the deposit and dissemination of scientific research documents, whether they are published or not. The documents may come from teaching and research institutions in France or abroad, or from public or private research centers.

L'archive ouverte pluridisciplinaire **HAL**, est destinée au dépôt et à la diffusion de documents scientifiques de niveau recherche, publiés ou non, émanant des établissements d'enseignement et de recherche français ou étrangers, des laboratoires publics ou privés.



Distributed under a Creative Commons Attribution - NonCommercial - ShareAlike| 4.0
International License

Flowchart – Legal issues related to the reuse or re-utilization of research data



For reminder, should any reuse of data further imply a dissemination thereof, [please check the flowchart on dissemination](#).