



Harnessing Naturally Occurring Tumor Immunity: A Clinical Vaccine Trial in Prostate Cancer

Mayu O. Frank, Julia Kaufman, Suyan Tian, Mayte Suárez-Fariñas, Salina Parveen, Nathalie E. Blachère, Michael J. Morris, Susan Slovin, Howard I. Scher, Matthew L. Albert, et al.

► To cite this version:

Mayu O. Frank, Julia Kaufman, Suyan Tian, Mayte Suárez-Fariñas, Salina Parveen, et al.. Harnessing Naturally Occurring Tumor Immunity: A Clinical Vaccine Trial in Prostate Cancer. PLoS ONE, 2010, 5 (9), pp.e12367. 10.1371/journal.pone.0012367 . pasteur-01402097

HAL Id: pasteur-01402097

<https://pasteur.hal.science/pasteur-01402097>

Submitted on 24 Nov 2016

HAL is a multi-disciplinary open access archive for the deposit and dissemination of scientific research documents, whether they are published or not. The documents may come from teaching and research institutions in France or abroad, or from public or private research centers.

L'archive ouverte pluridisciplinaire **HAL**, est destinée au dépôt et à la diffusion de documents scientifiques de niveau recherche, publiés ou non, émanant des établissements d'enseignement et de recherche français ou étrangers, des laboratoires publics ou privés.



Distributed under a Creative Commons Attribution 4.0 International License

Harnessing Naturally Occurring Tumor Immunity: A Clinical Vaccine Trial in Prostate Cancer

Mayu O. Frank¹*, Julia Kaufman¹, Suyan Tian², Mayte Suárez-Fariñas², Salina Parveen¹, Nathalie E. Blachère³, Michael J. Morris⁴, Susan Slovin⁴, Howard I. Scher⁴, Matthew L. Albert¹, Robert B. Darnell^{3,5*}

1 Laboratory of Molecular Neuro-Oncology, Rockefeller University, New York, New York, United States of America, **2** Center for Clinical and Translational Science, The Rockefeller University, New York, New York, United States of America, **3** Howard Hughes Medical Institute and Laboratory of Molecular Neuro-Oncology, The Rockefeller University, New York, New York, United States of America, **4** Genitourinary Oncology Service, Department of Medicine, Memorial Sloan-Kettering Cancer Center, New York, New York, United States of America, **5** Department of Neuro-Oncology, Memorial Sloan-Kettering Cancer Center, New York, New York, United States of America

Abstract

Background: Studies of patients with paraneoplastic neurologic disorders (PND) have revealed that apoptotic tumor serves as a potential potent trigger for the initiation of naturally occurring tumor immunity. The purpose of this study was to assess the feasibility, safety, and immunogenicity of an apoptotic tumor-autologous dendritic cell (DC) vaccine.

Methods and Findings: We have modeled PND tumor immunity in a clinical trial in which apoptotic allogeneic prostate tumor cells were used to generate an apoptotic tumor-autologous dendritic cell vaccine. Twenty-four prostate cancer patients were immunized in a Phase I, randomized, single-blind, placebo-controlled study to assess the safety and immunogenicity of this vaccine. Vaccinations were safe and well tolerated. Importantly, we also found that the vaccine was immunogenic, inducing delayed type hypersensitivity (DTH) responses and CD4+ and CD8+ T cell proliferation, with no effect on FoxP3+ regulatory T cells. A statistically significant increase in T cell proliferation responses to prostate tumor cells *in vitro* ($p = 0.002$), decrease in prostate specific antigen (PSA) slope ($p = 0.016$), and a two-fold increase in PSA doubling time ($p = 0.003$) were identified when we compared data before and after vaccination.

Conclusions: An apoptotic cancer cell vaccine modeled on naturally occurring tumor immune responses in PND patients provides a safe and immunogenic tumor vaccine. (ClinicalTrials.gov number NCT00289341).

Trial Registration: ClinicalTrials.gov NCT00289341

Citation: Frank MO, Kaufman J, Tian S, Suárez-Fariñas M, Parveen S, et al. (2010) Harnessing Naturally Occurring Tumor Immunity: A Clinical Vaccine Trial in Prostate Cancer. PLoS ONE 5(9): e12367. doi:10.1371/journal.pone.0012367

Editor: Torbjorn Ramqvist, Karolinska Institutet, Sweden

Received: March 1, 2010; **Accepted:** June 22, 2010; **Published:** September 1, 2010

Copyright: © 2010 Frank et al. This is an open-access article distributed under the terms of the Creative Commons Attribution License, which permits unrestricted use, distribution, and reproduction in any medium, provided the original author and source are credited.

Funding: This work was supported by the Burroughs Wellcome Fund and Doris Duke Foundation (MLA), the National Institutes of Health (NIH) (R01 CA85784 to RBD), the Rockefeller University Hospital Clinical and Translational Science Awards (CTSA)(grant UL1 RR024143) from the National Center for Research Resources at the NIH, the Leslie Misrock Memorial Fund, and David H. Koch. The funders had no role in study design, data collection and analysis, decision to publish, or preparation of the manuscript.

Competing Interests: The authors have declared that no competing interests exist.

* E-mail: darnell@rockefeller.edu

† Current address: The Laboratory of Dendritic Cell Biology, Department of Immunology, Institut Pasteur, Paris, France

‡ These authors contributed equally to this work.

Introduction

Tumor immunity in patients with paraneoplastic neurologic disorders (PND) have been studied with the hope of uncovering principles that can be applied to the general population of cancer patients[1,2]. These studies demonstrated tumor antigen-specific CD8⁺ T cells in the peripheral blood of PND patients[3,4], but also generated a paradox. PND antigens are normally expressed in the brain, and are ectopically expressed in tumors, but are not expressed in dendritic cells (DCs) that are necessary to prime naïve T cell responses.[5] Based on observations made with lupus antigens[6], we hypothesized that apoptotic cells might serve as an effective means of antigen transfer into DCs and presentation on MHC I for the activation of CD8⁺ T cells[7]. This proved to be correct for both tumor[3] and viral antigens[8], and it is likely that

phagocytosis of apoptotic cells serve as a general means by which the immune system surveys antigens throughout life. Insights from studying natural tumor immunity in PND provide a compelling base upon which to model clinical studies[2,9,10].

Several observations support the suggestion that apoptotic tumor cells may serve as a potent source of antigen for stimulating host immune responses *in vivo*. Theoretically, all potential tumor antigens within an apoptotic tumor cell, and multiple epitopes from each antigen, can be cross-presented by DCs, where processed antigen may be placed on all (typically six) MHC I alleles. This offers considerable advantages over peptide-pulsed DC protocols, in which the investigator must have knowledge of the tumor antigen and must choose specific MHC I-restricted peptides for antigen stimulation. Antigen presentation from apoptotic cells has been estimated to be 10,000–50,000 more

efficient than free peptide in loading the MHC molecules of a DC[11,12]. Apoptotic material is processed by a natural pathway: apoptotic cells are internalized by DC-restricted receptors, including the $\alpha_v\beta_3$ integrin receptor[13], then processed within DCs by distinct pathways[14]. These DCs then generate both MHC I and MHC II peptide epitopes[13], leading to the activation of both CD8⁺ and CD4⁺ T cells. Since the ability of DCs cross-presenting apoptotic cells to activate effector CD8⁺ T cells requires signals from CD4 helper cells[15], the ability of apoptotic material to be loaded on both MHC I and MHC II molecules is of particular importance in considering its potential in immunotherapy.

DCs presenting apoptotic tumor cells stimulate T cell responses in animals and *in vitro*[16]. Clinically, several studies have used killed tumor cells in vaccine trials, including glial[17–21], prostate[22], melanoma[23], breast[24], ovarian[25] and pediatric solid tumor cells[26] (reviewed in [9,16,27]). These studies have not focused on apoptotic death per se, but rather have killed tumor cells by various means (e.g. freeze-thawing, or large amounts of UVB and gamma irradiation), leading to incompletely characterized mixtures of necrotic and apoptotic cell death. Interpretation of these studies is complicated by controversy regarding the immunogenic potency of different forms of dead cells[28]. Nonetheless, some trials have indicated the potential for immunologic and clinical responses to autologous DC presenting dead tumor cells[19,23]. Here we set out to more precisely test the relationship between induction of PND-like tumor immune responses and development of a clinical vaccine. We induced apoptotic death of LNCaP prostate cancer cells, and allowed them to be phagocytosed by autologous DCs generated from prostate cancer patients' peripheral blood monocytes; such DCs were previously shown to stimulate both CD8⁺ and CD4⁺ T cells *in vitro*[29], and in a B16 mouse melanoma model DCs cross-presenting apoptotic tumor were effective in preventing tumor growth (Blachere et al., unpublished data). Here we report the safety and immunogenicity of DC/apoptotic LNCaP prostate tumor cells in a controlled study of 24 prostate cancer patients.

Results

Study Population

Twenty-four consecutive eligible patients were vaccinated with DC/LNCaP, together with control vaccinations. A total of 28.4–78.9 million (average 50.3 million) DCs cross-presenting apoptotic LNCaP tumor cells were given per patient, divided over 4 doses, each 2 weeks apart (Figure 1). At the time of study entry, 11 of 12 patients in Arm 1 and 10 of 12 patients in Arm 2 had only biochemical relapse with no other evidence of metastatic disease (Table 1). The mean age of patients was 62.5 ± 6.7 and 65.7 ± 9.2 years and the mean Gleason score at study entry was 7.25 and 7.17 in Arms 1 and 2, respectively.

DC vaccine characteristics

DCs were cocultured with LNCaP or LNCaP-M1 cells that were >90% apoptotic (Figure 2). All DC vaccine preparations administered met criteria for viability and maturity (Table 2 and Figure 2). DC function was monitored by allo-MLR; DCs stimulated 2×10^5 allogeneic T cells to incorporate $\geq 10^5$ CPM of ³H-thymidine on day 5 after an 18-hour ³H thymidine pulse (data not shown).

Safety

The incidence of injection-site and systemic reactions to vaccine are presented in Table 3. No vaccine related serious adverse events

were observed. Only 1 toxicity was significantly different between the placebo and vaccine groups in the single blind phase of the study: grade 1 or 2 injection site reactions that occurred in 11 of 12 patients in the vaccine group ($p < 0.001$), attributable to vaccine (but not placebo) generating DTH-like responses. There was no symptomatic evidence of autoimmune disease in any patient, including vasculitis, thyroiditis, colitis, neurologic disease, endocrinopathy or cardiomyopathy.

Immune response

All patients who received the DC/keyhole limpet hemocyanin (KLH) vaccine had a positive DTH response to KLH. None of the 24 patients had a response to LNCaP lysate at baseline (week 0). All 24 patients were given LNCaP lysate as part of DTH panels at weeks 3, 5, 7, and 9. Sixteen of 24 patients (67%) had a DTH response to LNCaP lysate in at least 1 of these 4 time points, with the highest proportion of patients (54.2%) responding to LNCaP lysate at 2 weeks after the last booster (week 9). Responses were maintained in 9 of 13 patients (69%) at 22 weeks after the last booster (week 29, Figure 3). The responses to LNCaP lysate were statistically significant at all time points with a 95% confidence interval. Normal saline, given as a control, was negative at all time points in all patients.

A ³H thymidine proliferation assay was used to assess the reactivity of T cells to KLH protein and to prostate tumor cells (either those used in vaccination (LNCaP) or to another prostate tumor cell line (PC3)). Negative control antigens included autologous monocytes and an irrelevant cell line (3T3). 3T3 infected with influenza was used as positive control. T cells were collected at week 0 (pre-vaccine) leukapheresis and week 13 (post-vaccine) leukapheresis (Figure 1). To be valid, each individual proliferation assay must have had a detectable influenza response pre- and post-vaccine. Two of 24 patients had no detectable influenza response and thus were excluded from analysis. The 22 evaluable patients, considered as a group, had no statistically significant difference in T cell response to influenza, pre- versus post-vaccine ($p = 0.310$, data not shown). There was a statistically significant T cell response to KLH post-vaccine vs pre-vaccine ($p = 0.008$), as well as to apoptotic LNCaP ($p = 0.017$) and apoptotic PC3 tumor cells ($p = 0.011$) (Figure 4a). There were no statistically significant differences in pre- vs post-vaccine T cell responses to antigen presenting cells (APCs) alone ($p = 0.160$), to control antigens, 3T3 ($p = 0.070$) or autologous monocytes ($p = 0.156$) (Table 4, Figure 4a and data not shown).

Based on the DTH data (Figure 3) and the ³H thymidine proliferation data (Figure 4a), we calculated and ranked a DTH index and a proliferation index to determine if there was an association between the two. A positive correlation was found (0.55 using the Spearman rank correlation test ($p = 0.008$)), indicating that patients who had positive DTH responses to LNCaP lysate also tended to have T cell proliferation responses to apoptotic LNCaP cells *in vitro*.

The proliferation response was also assessed by CFSE dye dilution assay[30]. In 5 of 6 patients, a CD8⁺ T cell response specific for prostate antigens was observed (Figure 4b and data not shown). We confirmed that all six patients tested also had a CD4⁺ T cell response to prostate antigens.

We considered the possibility that the increased T cell proliferation response post vaccination could relate to a decline in regulatory T cells in circulation. To determine the percent of CD4⁺ T cells that are T regulatory cells in pre- and post-vaccinated blood samples, PBMCs were stained and assessed for Foxp3 expression (Figure 5). No difference ($p = 0.924$) was found

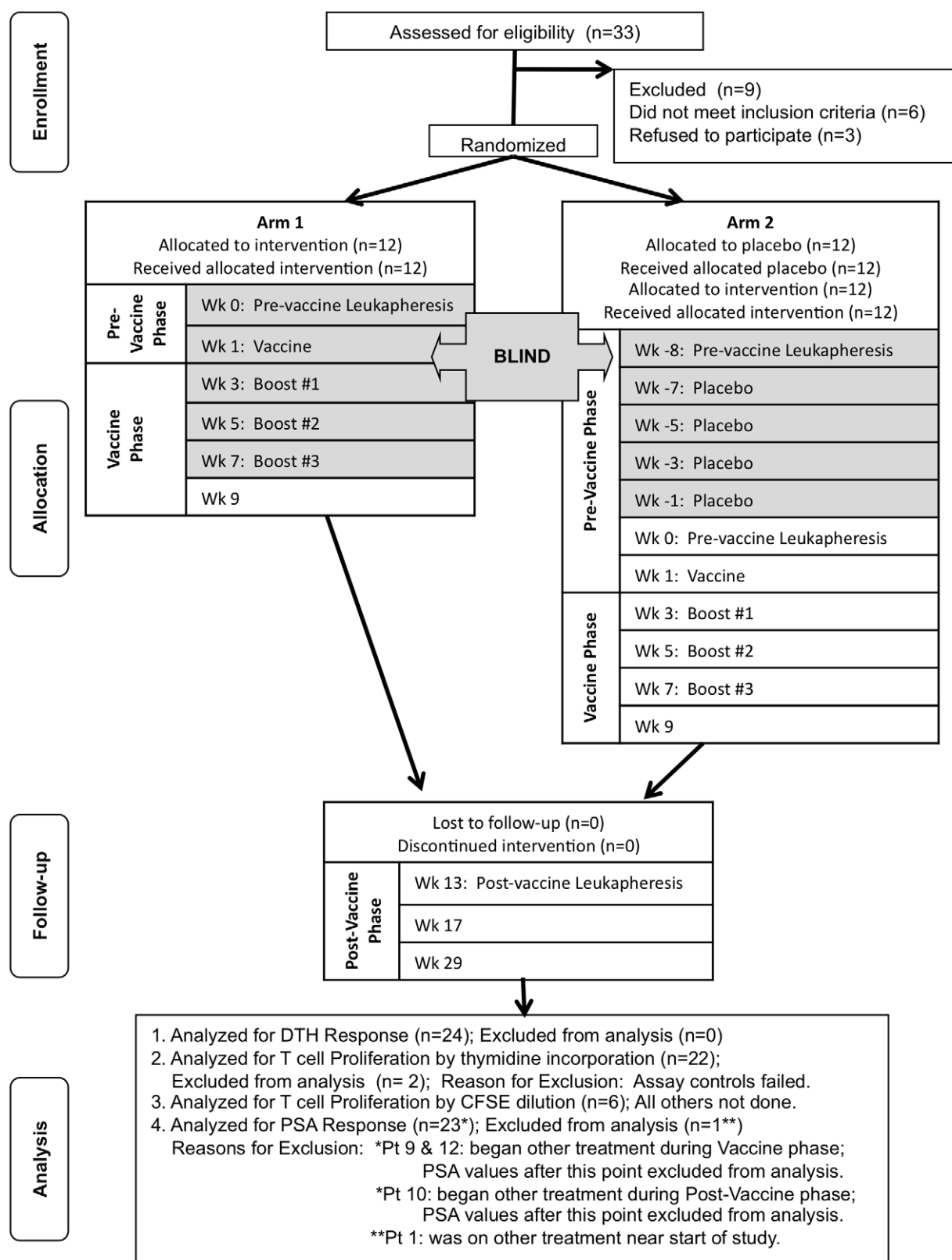


Figure 1. Study Design (CONSORT Diagram). Patients were screened and randomized into 1 of 2 arms, each with 12 patients. Patients in both arms were blind during the vaccine/placebo phases until Week 8. Patients in Arm 1 continued into the post-vaccine phase while patients in Arm 2 crossed over into the vaccine phase before entering post-vaccine phase.

doi:10.1371/journal.pone.0012367.g001

Table 1. Patient characteristics.

| Pt | Age | Previous Treatments | Clinical Status | Gleason Score | PSA at Study Entry |
|----|-----|---|-----------------|---------------|--------------------|
| 1 | 55 | Leuprolide Acetate, Bicalutamide, Nilutamide | CM/HR | 8 | 0.69 |
| 2 | 80 | RRP, Leuprolide Acetate, Bicalutamide | BCR/HR | 7 | 2.71 |
| 3 | 65 | RRP, Salvage RT | BCR | 7 | 0.79 |
| 4 | 58 | RRP | BCR | 6 | 0.49 |
| 5 | 64 | RRP | BCR | 7 | 0.59 |
| 6 | 75 | RRP | CM | 9 | 0.57 |
| 7 | 81 | RT | BCR | 6 | 8.66 |
| 8 | 54 | RRP, Salvage RT | BCR | 6 | 0.46 |
| 9 | 60 | RRP, IL-2 and J-591 Ab Study, Testosterone Gel/ Leuprolide or Goserelin Acetate/Docetaxel Study | BCR | 7 | 7.56 |
| 10 | 57 | Brachytherapy, Salvage RRP | BCR | 7 | 6.38 |
| 11 | 56 | RRP, Salvage RT, Leuprolide Acetate, Bicalutamide | BCR/HR | 8 | 5.24 |
| 12 | 69 | RRP, Salvage RT, Goserelin Acetate | BCR/HR | 7 | 0.86 |
| 13 | 63 | RRP, Salvage, RT, Testosterone Gel/Leuprolide or Goserelin Acetate/ Docetaxel Study | BCR/HR | 8 | 0.48 |
| 14 | 53 | RRP, Salvage RT, Leuprolide Acetate | LR/HR | 8 | 0.94 |
| 15 | 57 | RRP, Salvage RT, Leuprolide Acetate, Bicalutamide | BCR | 9 | 0.29 |
| 16 | 64 | RRP | BCR | 7 | 15.27 |
| 17 | 68 | RT, Testosterone Gel/Leuprolide or Goserelin Acetate/Docetaxel Study | BCR | 8 | 4.61 |
| 18 | 74 | RRP | BCR | 6 | 40.25 |
| 19 | 67 | RRP, Salvage RT | BCR | 7 | 5.02 |
| 20 | 63 | RRP, Leuprolide Acetate, Bicalutamide | BCR | 7 | 2.15 |
| 21 | 59 | RRP, Salvage RT | BCR | 7 | 0.62 |
| 22 | 70 | RRP, Salvage RT | BCR | 7 | 1.75 |
| 23 | 55 | RRP, Salvage RT | BCR | 7 | 0.44 |
| 24 | 68 | RRP, Salvage RT | BCR | 7 | 1.27 |

Previous Treatments: RRP = Radical Retropubic Prostatectomy, RT = Radiation Therapy. Clinical Status: CM = Clinical Metastasis, HR = Hormone Refractory, BCR = Biochemical Relapse, LR = Local Recurrence.
doi:10.1371/journal.pone.0012367.t001

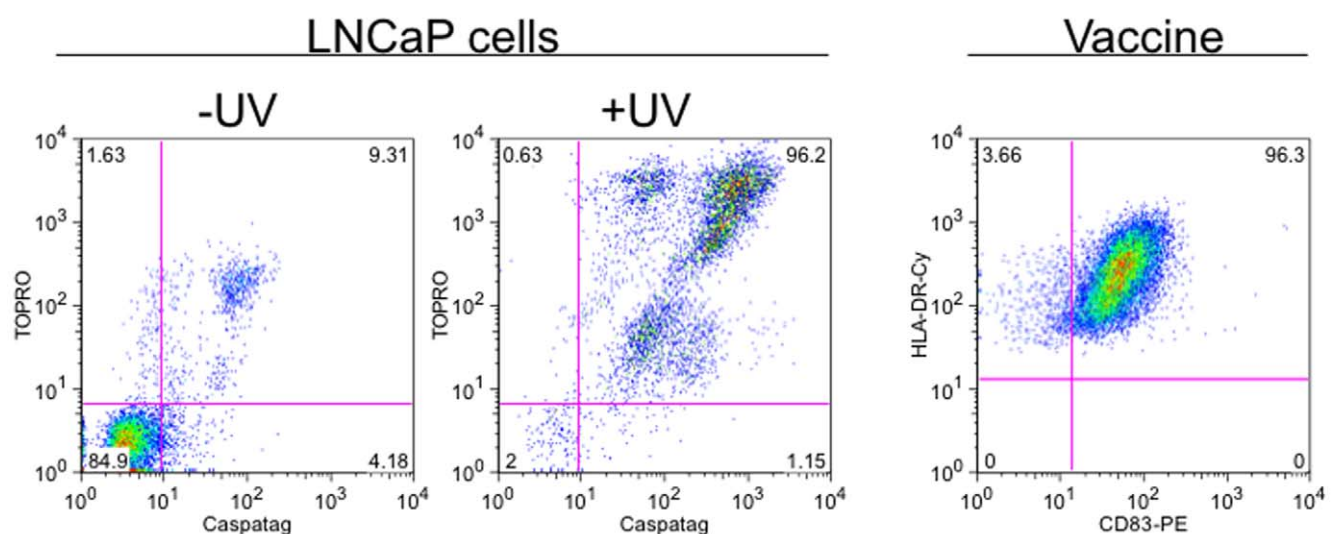


Figure 2. Preparation of Vaccine. UV irradiation (+UV) specifically induced apoptosis in LNCaP cells as indicated by 96% Caspatag+ TOPRO+ staining 38 hours post UV. DC cocultured with apoptotic LNCaP cells (Vaccine) are mature, with >96% CD83 positive cells. Data shown is representative of all 24 vaccines prepared.
doi:10.1371/journal.pone.0012367.g002

Table 2. Dendritic cell characteristics.

| Vaccine Groups | % CD14 + Median (Interquartile Range) | % CD83 + Median (Interquartile Range) | % PI + Median (Interquartile Range) |
|----------------|---------------------------------------|---------------------------------------|-------------------------------------|
| DC/LNCaP | 0.13 (0.83) | 86.94 (8.86) | 4.14 (5.87) |
| DC/LNCaP-M1 | 0.09 (0.48) | 87.82 (6.86) | 4.37 (4.69) |
| DC/KLH | 0.09 (0.41) | 96.19 (3.59) | 1.25 (1.72) |
| DCs alone | 0.17 (0.45) | 96.41 (4.94) | 1.52 (1.94) |

Vaccine groups were prepared from patient monocytes as described. DCs were assessed for maturation by staining for expression of surface markers, CD14 and CD83, and for viability using PI stain. Cells were assessed by flow cytometry on Day 8 prior to vaccine release. All vaccine groups administered met release criteria.
doi:10.1371/journal.pone.0012367.t002

Table 3. Adverse events.

| | Single Blind | | Unblinded | |
|---|---------------------|---------------------|---------------------|--------------------------------|
| | Arm 2 Placebo Phase | Arm 1 Vaccine Phase | Arm 2 Vaccine Phase | Arm 1 and 2 Post-Vaccine Phase |
| Total number of Adverse Events in each phase | 80 | 120 | 90 | 76 |
| No. Pts with at least 1 AE <i>No. of pts (Total No. of pts)</i> | 12 (12) | 12 (12) | 12 (12) | 22 (24) |
| RELATED TO VACCINE: | | | | |
| Adverse Events <i>No. of events (No. of pts)</i> | | | | |
| injection site reaction | 2 (2) | 22 (11) | 29 (12) | 0 |
| injection site reaction (grade 2) | 0 | 4 (2) | 0 | 0 |
| Serious Adverse Events <i>No. of events (No. of pts)</i> | 0 | 0 | 0 | 0 |
| NOT RELATED TO VACCINE: | | | | |
| Frequently Occurring Adverse Events (occurring ≥ 5 times in study) <i>No. of events (No. of pts)</i> | | | | |
| albumin, serum, low | 0 | 1 (1) | 4 (3) | 0 |
| albumin, urine, high | 2 (1) | 3 (3) | 0 | 3 (3) |
| ALT, serum, high | 3 (3) | 4 (2) | 0 | 2 (2) |
| ALT, serum, high (grade 2) | 0 | 0 | 1 (1) | 0 |
| ANA, high | 1 (1) | 1 (1) | 3 (3) | 4 (4) |
| BUN, serum, high | 1 (1) | 4 (3) | 2 (2) | 1 (1) |
| chloride, serum, high | 4 (4) | 1 (1) | 0 | 2 (2) |
| CO ₂ , serum, low | 4 (4) | 3 (2) | 2 (2) | 1 (1) |
| creatinine, serum, high | 1 (1) | 3 (2) | 2 (2) | 2 (2) |
| diarrhea/loose stools | 1 (1) | 5 (3) | 0 | 0 |
| edema, lower extremities | 2 (2) | 0 | 3 (1) | 1 (1) |
| eosinophils, high | 3 (3) | 1 (1) | 1 (1) | 1 (1) |
| fatigue | 5 (5) | 6 (5) | 5 (4) | 0 |
| glucose, serum, high, non-fasting | 5 (5) | 6 (6) | 2 (1) | 7 (6) |
| ketones, urine, high | 2 (2) | 1 (1) | 1 (1) | 3 (3) |
| potassium, serum, high | 3 (3) | 0 | 6 (5) | 1 (1) |
| potassium, serum, high (grade 2) | 1 (1) | 0 | 0 | 0 |
| rash | 2 (2) | 2 (1) | 0 | 3 (2) |
| URI | 3 (3) | 3 (3) | 1 (1) | 0 |
| Serious Adverse Events <i>No. of Events (No. of pts)</i> | 0 | 1 (1) | 0 | 3 (1) |
| Hospitalization: Cardioversion for atrial fibrillation | 0 | 1 (1) | 0 | 0 |
| Hospitalization: Urinary retention | 0 | 0 | 0 | 1 (1) |
| Elective Hospitalization: Cholecystectomy | 0 | 0 | 0 | 1 (1) |
| Elective Hospitalization: Inguinal hernia repair | 0 | 0 | 0 | 1 (1) |

Study visits during the placebo and vaccine phases are identical. Placebo injections consisted of vaccine vehicle only. All adverse events are Grade 1 unless otherwise specified. There were no vaccine related serious adverse events. The only statistically significant adverse event was the number of patients having injection site reactions between Arm 1 vaccine phase and Arm 2 pre-vaccine placebo phase ($p = 0.001$, Fisher's exact test). All other adverse events listed are not statistically significant ($p \geq 0.2$ in all cases, Fisher's exact test) between Arm 1 vaccine phase and Arm 2 pre-vaccine placebo phase.
doi:10.1371/journal.pone.0012367.t003

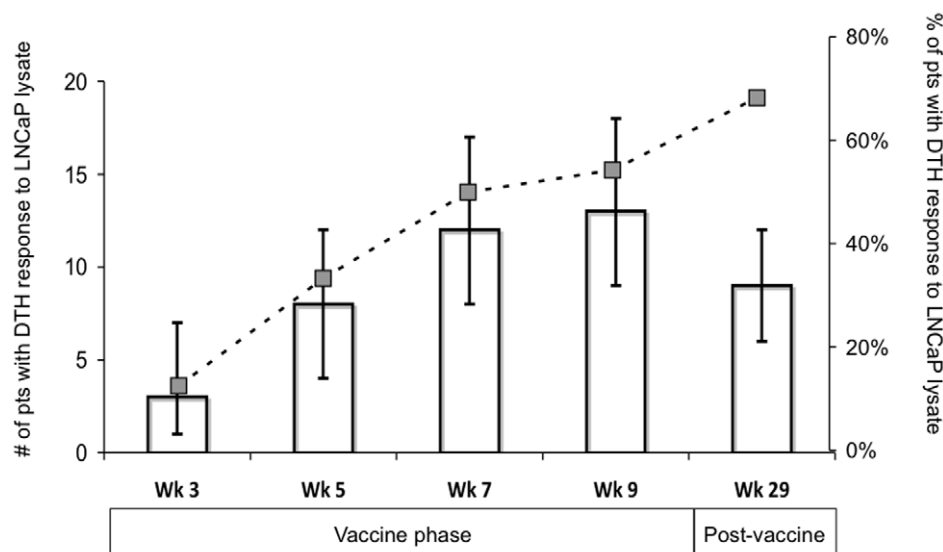


Figure 3. DTH Responses. Vaccine induced DTH response to LNCaP cell lysates injected intradermally were measured at the indicated times. Week 1 was baseline, at which time no patients had DTH responses (data not shown). DTH responses were considered positive at ≥ 5 mm erythema read at 48 hours after placement. Bars indicate the number of patients with positive responses at each time point. Error bars represent 95% confidence intervals. Dotted line represents trend of percentage of patients with positive responses at each time point. Statistically significant positive DTH responses to LNCaP cell lysate appeared at Week 3 (first time point after baseline) and responses were still present in 9 of 13 patients (69%) at 22 weeks after the last booster dose (Week 29). doi:10.1371/journal.pone.0012367.g003

in Foxp3 expression comparing pre- and post-vaccination CD4⁺ T cells from 15 patients (Table 4).

PSA response

The prostate specific antigen doubling time (PSADT) was calculated for each patient during each phase of study. The median doubling time during the pre-vaccine phase was 4.5 months, and this increased to 5.4 and 8.9 months during the vaccine and post-vaccine phases respectively. There were statistically significant differences in PSADT between the pre- and post-vaccine phases ($p = 0.003$) and between the vaccine and post-vaccine phases ($p < 0.001$) but not between the pre-vaccine and vaccine phases ($p = 0.915$).

We also compared the slope of the PSA rise between the 3 study phases. Eighteen of 23 (78%) evaluable patients had a decrease in PSA slope between the pre- and post-vaccine phases. When considering all 23 patients, there was a statistically significant decrease in the PSA slope between the pre-vaccine and post-vaccine phases of $-0.093/\text{month}$ ($p = 0.016$, Figure 6 and Table 5). There was no statistical difference in PSA slope between the pre-vaccine and vaccine phases ($-0.018/\text{month}$, $p = 0.681$) or the vaccine and post-vaccine phases ($-0.075/\text{month}$, $p = 0.098$). We evaluated whether this PSA slope change might result from the development of serum anti-PSA antibodies. Pre- and post-vaccine serum was assessed by measuring serum antibody reactivity to purified PSA protein on Western blot, using PSA monoclonal antibodies as a positive control. We found no evidence for antibody reactivity to PSA (data not shown). Nonetheless, we cannot rule out that antibodies are not detectable due to antigen/antibody complexes being formed and that these somehow aided in clearing PSA from the serum.

We then stratified the study population with two more fixed effects on a mixed model and conducted a likelihood ratio test; the patients that had a DTH response to LNCaP lysate had a significantly different PSA slope change when compared to those

that had no DTH response to LNCaP lysate ($p = 0.004$). Sixteen of 24 patients had DTH responses to LNCaP in at least one time point. This group of patients had a statistically significant change in PSA slope between the pre-vaccine and post-vaccine phases ($-0.105/\text{month}$, $p = 0.020$, Table 6). Eight of 24 patients had no response to LNCaP lysate at any time point, and these patients had no statistically significant change in slope between the pre- and post-vaccine phases ($-0.033/\text{month}$, $p = 0.631$). When we stratified the study population into 2 groups based on PSA value at study entry, the likelihood ratio test indicated a significantly different PSA slope change between these two groups ($p < 0.001$). With the mixed model, we found that those who had a PSA ≥ 1 ng/ml at study entry (15 patients) had a significant PSA slope change between pre- to post-vaccine phase ($-0.099/\text{month}$, $p = 0.031$, Table 6) while the patient subgroup that had a PSA < 1 ng/ml at study entry (8 patients) did not ($-0.078/\text{month}$, $p = 0.279$). Taken together, these data demonstrate that the study patients taken as a group had a significant reduction in the rate of rise of PSA after vaccination, and that this effect was particularly evident in those with immunologic response and more readily measurable disease.

Discussion

Patients with PND develop effective tumor suppression of common cancer types[2] that are likely to be triggered by immune recognition of ectopic expression of neuronal proteins by those cancers. To trigger such immune responses, we hypothesized and demonstrated that apoptotic tumor serves as a potent source of antigen for presentation by APCs[7,29]. The focus of this study was to evaluate the safety and immunogenicity of mimicking this means of triggering tumor immunity by using prostate cancer patients' DCs cross-presenting apoptotic tumor cells as a cancer vaccine.

Despite the conceptual link between the development of apoptotic cells as a vaccine and tumor immunity in PND, we

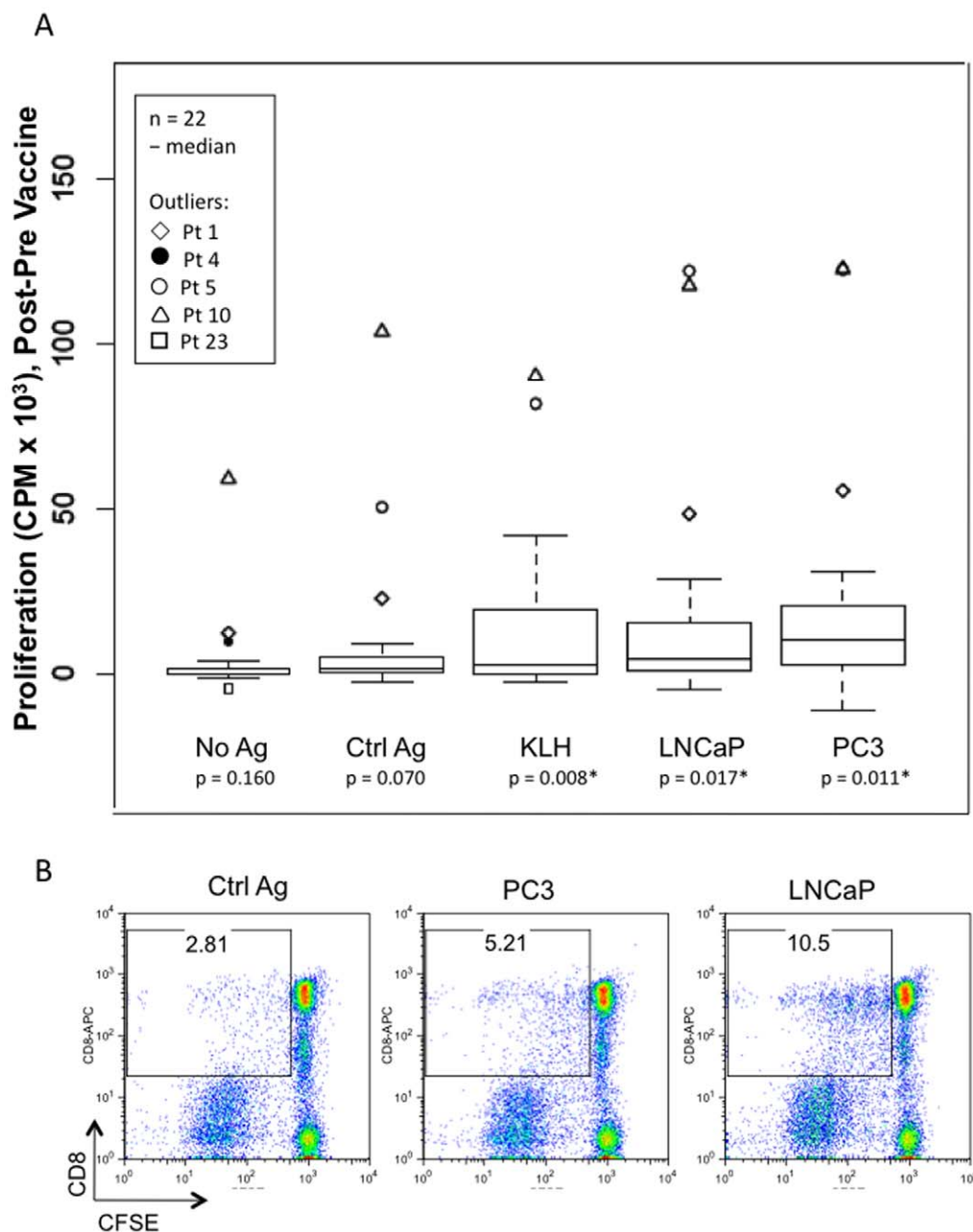


Figure 4. T cell proliferation response in vitro. Comparison of pre- and post-vaccine bulk T cell responses to prostate antigen. a. Apoptotic tumor cells (LNCaP and PC3, or an irrelevant cell line (3T3)) or KLH protein were co-cultured with patient peripheral blood monocytes and syngeneic bulk T cells obtained from patients pre- or post-vaccination. Monocytes without exogenous antigen (No Ag) or apoptotic 3T3 cells (Ctrl Ag), served as negative controls. Proliferation was assessed on day 5 after an 18-hour ³H thymidine pulse. Data is presented for 22 of 24 patients. The difference in proliferation (post- minus pre-vaccine) for each antigen group is shown in box plots. Values reported are average counts per minute (CPM) of triplicate wells. The median difference for each antigen group is shown by the line in the box. Each patient who is an outlier is indicated by a unique symbol. Statistically significant differences in pre-vaccine vs. post-vaccine T cell proliferative responses were found for KLH (p=0.008), LNCaP (p=0.017) and PC3 (p=0.011). b. Bulk T cells obtained post-vaccination were stained with CFSE and cultured with DCs cross-presenting prostate antigens, LNCaP and PC3, or an irrelevant cell line (293 cells, Ctrl Ag). Cell proliferation on day 5, assessed by CFSE dye dilution, is shown on the x-axis and CD8 expression is shown on the y-axis. Percentages shown represent CD8+ cells that have divided within the bulk T cell population. Four of five additional patients tested showed similar CD8+ responses; data shown are for patient #15. doi:10.1371/journal.pone.0012367.g004

found no evidence that this approach triggered autoimmune disease in our patients. We did note small ANA elevations post vaccine in 5 patients (titer of 1:160 in one patient, \leq 1:80 in four patients) which resolved over time in 4/5 patients. However, we also noted that of 7 patients with detectable ANA levels pre-

vaccination, 5 became lower after vaccination. Statistical analysis of ANA changes pre versus post vaccine/placebo in Arm 1 versus Arm 2 revealed no significant differences (Fisher's exact test), and we conclude that ANA changes were not clinically meaningful; moreover, such transient responses have commonly been seen in

Table 4. Confidence intervals for T cell proliferation assay and Foxp3+ cell analysis.

| Group: | p-value | 95% CI |
|--------------|---------|-----------------------|
| No Ag | 0.160 | (−1703.275, 9649.413) |
| KLH | 0.008* | (4681.672, 27308.539) |
| LNCaP | 0.017* | (3759.725, 34618.214) |
| PC3 | 0.011* | (5835.155, 38744.036) |
| 3T3 | 0.070 | (−862.319, 20294.713) |
| Foxp3+ cells | 0.160 | (−0.978, 0.893) |

95% confidence intervals and p-values for T cell proliferation response (^3H thymidine incorporation assay) and %Foxp3+ cells (FACS analysis) comparing cells collected pre-vaccine and post-vaccine using the paired t-test.

doi:10.1371/journal.pone.0012367.t004

DC based vaccines[26,31,32]. One reason that we chose prostate cancer as an initial tumor for study using this vaccine approach is that these tumors are rarely associated with PND. Despite the safety of the vaccine here, caution is warranted in extending this approach to patients harboring tumors known to be associated with PND (for example gynecologic tumors expressing the cdr2 or Nova antigens and small cell lung cancers expressing the Hu antigen)[1,2].

Our dendritic cell/apoptotic tumor vaccine was immunogenic. Sixty-seven percent of patients developed DTH responses to LNCaP antigens. Furthermore, these DTH responses were positively correlated with post-vaccine bulk T cell proliferation responses. This high level of immunogenicity was similar to that reported in other studies of peptide-pulsed or tumor cell associated DC vaccines. Importantly, these responses included CD8+ T cell responses to prostate tumor cells (Figure 4b). This is significant, as a critical determinant of successful tumor vaccines is likely to be

induction of CD8+ T cell responses[33]. The ability to detect such responses here is consistent with the observation that cross-presentation of apoptotic cells are able to stimulate naïve and memory CD8+ T cell responses to tumor cells[3] or to virally infected cells[8] *ex vivo*. Due to the nature of the disease, autologous tumor cells were not available for testing T cell responses. However, both the CD4 and CD8 proliferation responses were detected to prostate tumor cell lines, despite the high background responses seen in T cells post vaccination (Figure 4a). Such background responses have been seen before in DC-based vaccines and are of uncertain etiology[34], and may be reflected in transient increases in ANA seen in some patients. It is likely that patients had variable immune responses to tumor vaccination, either resulting from intrinsic differences in immune repertoire, or from actions of the tumor itself to modify patient immune responses[35].

Significantly, we found that PSA slopes decreased and PSADT increased after vaccination in our patient population as a whole ($p = 0.016$). We hypothesized that if this correlation was related to the immunogenicity of the vaccine, PSA changes should be present in the subset of patients showing immunogenic response to vaccine but not in those who do not. In fact, patients who had DTH responses to LNCaP after vaccination had significant decreases in PSA slope ($p = 0.020$), compared to patients who did not have DTH responses ($p = 0.631$). Taken together, our data suggests that the changes seen in PSA slope represent an immune response to patient tumor cells *in vivo*.

Although variable immunologic and clinical responses have been reported to vaccines using dead tumor cells as a source of antigen, these studies have not focused on using pure, well-defined populations of apoptotic tumor cells. We used UV-B irradiation to induce apoptotic (not necrotic) death in >90% of the prostate cell line used for the vaccine; nonetheless, our side-effect profile was very low, similar to other tumor vaccines. Most other studies have used gamma irradiation or freeze-thawing, generating variable

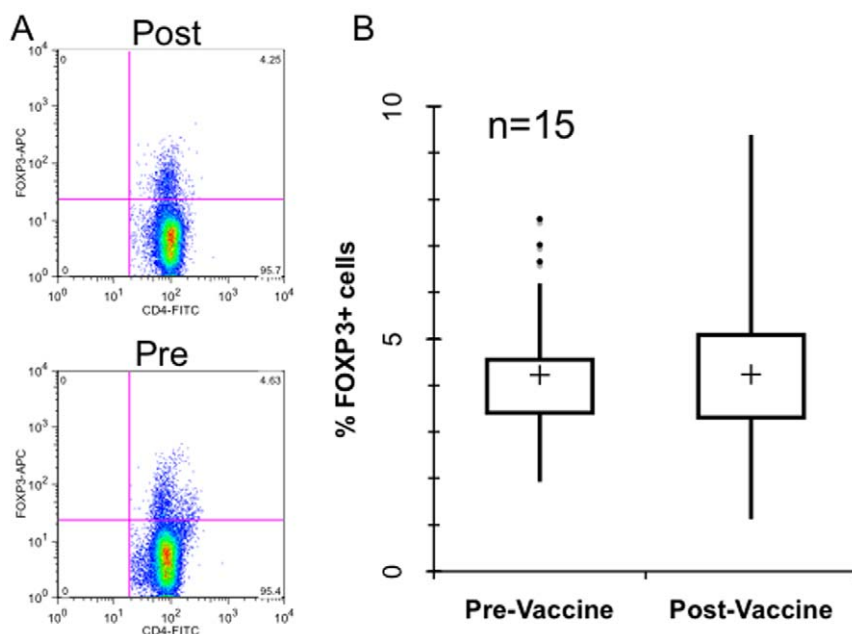


Figure 5. Foxp3 expression pre- and post-vaccination. a. FACS profile of Foxp3 expression in pre- and post-vaccinated peripheral blood gated on CD4+ T cells. A representative patient (#13) is shown. b. Box plots of the percent Foxp3+ cells (gated on CD4+ T cells) pre and post-vaccination in 15 representative patients, including those across the whole range of proliferative responses and changes in PSA slope. The median is shown by the +. Outliers are indicated by •. No difference in pre-vaccine vs. post-vaccine T cell expression of Foxp3 ($p = 0.924$) was observed.

doi:10.1371/journal.pone.0012367.g005

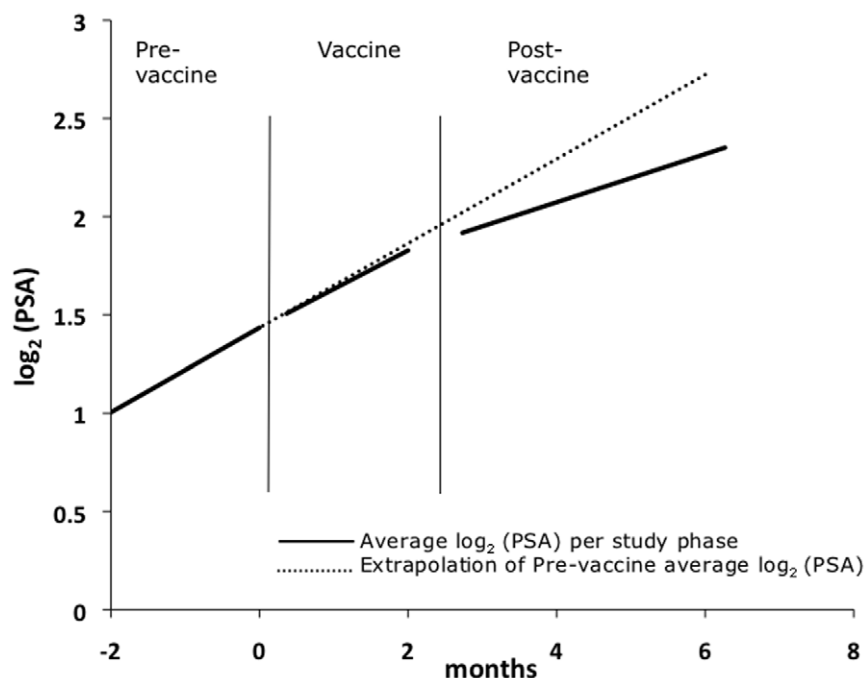


Figure 6. Change in PSA slope pre- to post-vaccine. Graph of the average \log_2 (PSA) slope per study phase (solid line); for comparison, an extrapolation of the pre-vaccine average \log_2 (PSA) slope is shown (dotted line). Based on the linear spline model, the average change in PSA slope of 23 patients from pre- to post-vaccine phases is $-0.093/\text{month}$ ($p=0.016$). One patient's PSA values were not included in the analysis as his pre-vaccine values were affected by other treatment near the start of study participation. Three other patients started other treatment either during or after vaccination; PSA values obtained after this point were not included in the analysis.
doi:10.1371/journal.pone.0012367.g006

mixtures of apoptotic and necrotic cells, which may underlie differences in immunogenic potential[28].

Taken together, the results presented in this study provide initial safety and immunogenicity data for a vaccine mimicking what we believe is a critical trigger for naturally occurring effective tumor immune responses seen in PND patients. These responses correlate with a clinically relevant response to patient tumor, as assessed by highly statistically significant effects on PSA slope and doubling time. These observations suggest that this vaccination approach warrants further exploration as a safe and potent means of triggering tumor immune response in the general population of cancer patients. Future vaccine modifications to be considered are the addition of immune adjuvants during vaccine preparation *ex vivo* or in conjunction with vaccine administration *in vivo*[9,36], or the use of autologous tumor as a source of apoptotic antigen. In addition, a safe means of vaccinating against prostate (or other) cancers may serve in a synergistic manner with other immune-stimulating agents, such as CTLA4-Ig, which are showing promise

in combined immunotherapies in prostate[37] and other cancers[38].

Methods

The protocol for this trial and supporting CONSORT checklist are available as supporting information; see Checklist S1 and Protocol S1.

Patients and Study Design

Ethics Statement. The study was approved by The Rockefeller University Institutional Review Board (RDA-0466) and the FDA (IND 10710). Written consent was obtained from all patients. No *de novo* cell lines were generated in this study.

Table 5. Confidence intervals for PSA slopes.

| PSA Slopes by Study Phases: | p-value | 95% CI |
|-----------------------------|---------|--------------------|
| Pre- vs Post | 0.016 | (−0.1694, −0.0166) |
| Pre- vs Vaccine | 0.681 | (−0.1044, 0.0682) |
| Vaccine vs Post | 0.098 | (−0.1613, 0.0134) |

95% confidence intervals and p-values for PSA slopes comparing pre- vs vaccine, vaccine vs post-vaccine, and pre- vs post-vaccine phases from the linear mixed model.

doi:10.1371/journal.pone.0012367.t005

Table 6. Confidence intervals for PSA slopes upon stratification.

| Stratified by: | p-value | 95% CI |
|---------------------------------|---------|--------------------|
| Whole group | 0.016 | (−0.1694, −0.0166) |
| Response by DTH to LNCaP lysate | | |
| Non-Responders | 0.631 | (−0.1682, 0.1022) |
| Responders | 0.020 | (−0.1932, −0.0168) |
| PSA at start of study | | |
| <1 ng/ml | 0.279 | (0.2191, 0.0631) |
| ≥1 ng/ml | 0.031 | (−0.1872, −0.0108) |

95% confidence intervals and p-values for PSA slopes comparing pre- vs vaccine, upon stratification by DTH response or no response to LNCaP lysate or upon stratification by PSA <1 ng/ml or 1 ng/ml at start of study.

doi:10.1371/journal.pone.0012367.t006

Study Design. The study was conducted at the Rockefeller University in New York; twenty-four patients aged 53 to 81 were enrolled between November 2003 and February 2006. All authors vouch for the completeness and accuracy of the data and its analysis and participated in writing the article.

Twenty-four patients were randomly assigned to one of two arms for the purpose of assessing vaccine safety, our primary endpoint (Figure 1). All patients were blinded. Twelve patients assigned to Arm 1 received vaccine followed by 3 vaccine boosts at 2-week intervals, for a total of four injections over eight weeks, and were unblinded after the last booster. Twelve patients assigned to Arm 2 received placebo (vehicle (5% DMSO in saline)) for each of four injections, were unblinded, crossed over to the vaccine phase, and received vaccine followed by 3 boosts at 2-week intervals. After the last booster, patients in both groups were followed for up to 22 weeks. All time points in both arms up to and including the day of the first vaccination with DC vaccine were considered pre-vaccine phase. All time points from the first booster through the first follow up visit after the final vaccination (week 9) was considered vaccine phase. All remaining time points in the study were considered to be post-vaccine phase. Safety data was compared between the 2 arms of the study, while immune and PSA data were assessed by comparisons made between pre- and post-vaccine phases in all 24 patients.

Patient Selection and Vaccination. Patients were eligible to participate if they provided informed consent, had biopsy proven prostate cancer and progressive disease: PSA documented to be rising on 3 occasions, either despite castrate testosterone levels (below 50 ng/dl) or despite definitive local therapy (prostatectomy, radiation, etc.). Exclusion criteria included prior biologic therapy with dendritic cells, autoimmune disease, or significant major organ disease.

DC vaccines were given together with DTH panels and patients were closely observed for one hour. Patients returned to clinic at 48 hours, at which time they were examined clinically and their DTH responses were read. Vaccines were administered at a cell dose ranging from $2-10 \times 10^6$ DCs/vaccination, given subcutaneously in the inner aspect of the upper arm, approximately 6–8 cm from the axillary lymph nodes. Patients received one priming and three biweekly booster vaccinations. During the first two injections, patients also received $2-10 \times 10^6$ DC/KLH.

Vaccine

Vaccine was manufactured in a BSL-2 facility maintained and independently audited to meet Good Tissue Practice specifications. To prepare autologous DCs, peripheral blood mononuclear cells (PBMCs) were obtained by leukapheresis, adhered to endotoxin free tissue-culture dishes (Falcon), and differentiated *in vitro* to immature DCs over six days in RPMI-1640 supplemented with 1% autologous plasma, GM-CSF (180 ng/ml; Bayer HealthCare Pharmaceuticals) and IL-4 (10 ng/ml; R&D Systems) as described[29,39]. LNCaP prostate tumor cells were obtained from the American Type Cell Culture and a master cell bank was made and screened by BioReliance Corporation (Rockville, MD) to rule out contamination or adventitious agents. LNCaP cells from the master stock (frozen in Aim V media (Invitrogen) plus BSE-free fetal bovine serum (20% FBS; HyClone) and 5% DMSO (Edward Life Sciences)) were expanded in Aim V media/1% FBS, and cells were treated with UV-B irradiation such that >90% of cells underwent apoptotic death (Caspasg positive, as described[29]). Immature DCs and apoptotic LNCaP were co-cultured at a ratio of 1:1 for 36–48 hours in the presence of PGE₂ (20 mM; Sigma) and TNF- α (150 ng/ml; R&D Systems) to mature DCs as described[40]. DCs pulsed with KLH (2.5 μ g/ml,

biosyn) provided a positive control for DC function. All patients were also immunized with $2-10 \times 10^6$ DCs cross-presenting apoptotic LNCaP producing the M1 antigen as a potential positive control (DC/LNCaP-M1), but only four patients were HLA A2.1⁺ and tetramer analysis did not show boosted M1 responses post vaccination in these patients (data not shown). The quality and viability of the vaccine was monitored by flow cytometry; to pass release criteria the HLA-DR (DC) cell fraction had to be >70% CD83+, <15% CD14+ and <20% Propidium Iodide (PI) + (Serologicals). All antibodies were purchased from BD Pharmingen. Sterility was tested by gram stain, by culture for bacterial and fungal contamination (BacT/ALERT, Biomereux), and by DNA fluorochrome for mycoplasma (Bionique Testing Laboratories, Inc.). The LAL method (Associates of Cape Cod) was used to test for endotoxin. The final product was divided into 4 equal aliquots, each containing $2-10 \times 10^6$ DCs each. The first aliquot was given as a “fresh” dose; all other aliquots were frozen and thawed prior to administration.

Clinical and Immunomonitoring

Clinical Monitoring. Patients were monitored at each study visit by history, physical examination, and by laboratory evaluations including CBC, chemistries, and urinalysis, for any adverse effects. The National Cancer Institute Common Toxicity Criteria version 3 was used to grade toxicities. Patients were also asked to maintain a diary of local injection site reactions and systemic adverse events for one week following each vaccination.

To assess for clinical response, PSA levels were measured in the serum using MSA Bayer Immuno I or IEA Tosoh Nexia assays at each study visit. The PSA slope was calculated for each phase of the study (pre-vaccine, vaccine, and post-vaccine phases) using a linear mixed model with two knots representing the change in slope in each phase of the study. In addition, for each phase of study for each patient, a PSA doubling time (PSADT) was calculated using the formula: 1 divided by the slope log₂ PSA derived from this linear spline model.

Immunomonitoring. A DTH panel was placed intradermally at weeks 1 (vaccine), 3 (Boost #1), 5 (Boost #2), 7 (Boost #3), 9, 17 and 29 to assess for T cell responses. The panel included lysate of 10^5 LNCaP cells (in 0.1 ml normal saline), 0.05 mg KLH, candida or tetanus toxoid (whichever the patient had responses to at baseline, as positive control), and saline (as negative control). Responses were considered positive if erythema was equal to or greater than 5 mm at 48 hours post implantation.

We evaluated immunogenicity outcomes against apoptotic LNCaP and PC3 (another prostate cancer tumor cell line) by ³H thymidine or CFSE proliferation assays as described[29] with the following modifications. In the ³H thymidine assay, autologous monocytes (CD14+ cells) were used as APCs. 3T3 cells, an irrelevant cell line, were used as the negative control antigen and influenza infected (strain A/P/R8) 3T3 cells were used as a positive control for both pre-vaccine and post-vaccine T cell responses. 3T3 cells were obtained from the American Type Cell Culture. In the CFSE assay, DCs cross-presenting prostate tumor antigens or 293 cells (irrelevant cell line used as negative control antigen) were used as APCs and cultured with T cells stained with CFSE (Vibrant CFDA SE Cell Tracer Kit, Invitrogen). On day 5, T cells were stained with anti-CD8 conjugated antibody (Becton Dickinson) and analyzed using FlowJo software. All cell lines were UV-B irradiated to induce apoptotic death three hours prior to co-culture with APCs[29].

To assess for correlations between patients who had a DTH response to LNCaP lysate and those who had T cell proliferation responses to apoptotic LNCaP *in vitro*, patients were ranked by a

DTH index and a T cell (^3H thymidine) proliferation index. The DTH index was calculated as the number of positive DTH responses to LNCaP lysate divided by the total number of DTH time points for each patient. The T cell proliferation index was calculated as the post-vaccine LNCaP response (CPM) minus 2 standard deviations, divided by post-vaccine 3T3 response (CPM) plus 2 standard deviations.

FACS staining of regulatory T cells was done by surface staining with anti-CD4-FITC (Becton Dickinson) followed by intracellular staining with anti-Foxp3-APC (eBioscience, clone PCH101) per manufacturers instructions. For analysis, PBMCs were gated on CD4+ T cells and the percentage of Foxp3+ cells was determined (FlowJo).

Statistical Analysis

The protocol called for 12 patients to be recruited to each of two arms, which would have 90% power to detect an increase in cumulative serious adverse events (SAEs) from 5% in the placebo group to 50% in the vaccine group at the 10% level. All adverse events were analyzed using Fisher's exact test to compare placebo and vaccine phase. Significance of DTH responses to LNCaP cell lysate was determined by the exact binomial test with 95% confidence intervals. To analyze pre- to post- T cell proliferation data (per antigen) for study subjects as a group, a two-sampled paired t-test was used with 95% confidence intervals. The Spearman rank correlation test was used to determine if those that had DTH responses to LNCaP lysate also had T cell proliferation responses to apoptotic LNCaP *in vitro*. The paired t-test was used to compare the percentage of pre- vs post-vaccine Foxp3+ cells in PBMCs with 95% confidence intervals. In all of the above tests, the differences or correlation were deemed statistically significant if the p-value was less than 0.05.

To model the evolution of PSA (in log-scale) during the three study phases (pre-vaccine, vaccine, and post-vaccine phases), a mixed linear spline model was used. Two knots (one at the start of the vaccine phase and the other at the start of the post-vaccine phase) were used to directly quantify the differences in slopes between each phase. To account for the heterogeneous treatment effect and the repeated measures structure, random effects are incorporated into the model. For the general model, random effects for the intercept, slope and the first knot were considered.

References

- Darnell RB, Posner JB (2003) Observing the invisible: successful tumor immunity in humans. *Nat Immunol* 4: 201.
- Darnell RB, Posner JB (2003) Paraneoplastic syndromes involving the nervous system. *N Engl J Med* 349: 1543–1554.
- Albert ML, Darnell JC, Bender A, Francisco LM, Bhardwaj N, et al. (1998) Tumor-specific killer cells in paraneoplastic cerebellar degeneration. *Nat Med* 4: 1321–1324.
- Albert ML, Austin LM, Darnell RB (2000) Detection and treatment of activated T cells in the cerebrospinal fluid of patients with paraneoplastic cerebellar degeneration [see comments]. *Annals of Neurology* 47: 9–17.
- Banchereau J, Steinman RM (1998) Dendritic cells and the control of immunity. *Nature* 392: 245–252.
- Casciola-Rosen LA, Anhalt G, Rosen A (1994) Autoantigens targeted in systemic lupus erythematosus are clustered in two populations of surface structures on apoptotic keratinocytes. *J Exp Med* 179: 1317–1330.
- Darnell RB (1996) Onconeural antigens and the paraneoplastic neurologic disorders: at the intersection of cancer, immunity and the brain. *Proc Natl Acad Sci USA* 93: 4529–4536.
- Albert ML, Sauter B, Bhardwaj N (1998) Dendritic cells acquire antigen from apoptotic cells and induce class I-restricted CTLs. *Nature* 392: 86–89.
- Palucka AK, Ueno H, Fay JW, Banchereau J (2007) Taming cancer by inducing immunity via dendritic cells. *Immunol Rev* 220: 129–150.
- Dunn GP, Old LJ, Schreiber RD (2004) The three Es of cancer immunoediting. *Annu Rev Immunol* 22: 329–360.
- Inaba K, Turley S, Yamaide F, Iyoda T, Mahnke K, et al. (1998) Efficient presentation of phagocytosed cellular fragments on the major histocompatibility complex Class II products of dendritic cells. *J Exp Med* 188: 2163–2173.
- Li M, Davey GM, Sutherland RM, Kurts C, Lew AM, et al. (2001) Cell-associated ovalbumin is cross-presented much more efficiently than soluble ovalbumin *in vivo*. *J Immunol* 166: 6099–6103.
- Albert ML, Pearce SF, Francisco LM, Sauter B, Roy P, et al. (1998) Immature dendritic cells phagocytose apoptotic cells via $\alpha\text{v}\beta 5$ and CD36, and cross-present antigens to cytotoxic T lymphocytes. *J Exp Med* 188: 1359–1368.
- Blachere NE, Darnell RB, Albert ML (2005) Apoptotic cells deliver processed antigen to dendritic cells for cross-presentation. *PLoS Biol* 3: e185.
- Albert ML, Jegathesan M, Darnell RB (2001) Dendritic cell maturation is required for the cross-tolerization of CD8+ T cells. *Nat Immunol* 9: 1–8.
- Benencia F, Coukos G (2008) Biological therapy with oncolytic herpesvirus. *Adv Exp Med Biol* 622: 221–233.
- Okada H, Pollack IF, Lieberman F, Lunsford LD, Kondziolka D, et al. (2001) Gene therapy of malignant gliomas: a pilot study of vaccination with irradiated autologous glioma and dendritic cells admixed with IL-4 transduced fibroblasts to elicit an immune response. *Hum Gene Ther* 12: 575–595.
- Rutkowski S, De Vleeschouwer S, Kaempgen E, Wolff JE, Kuhl J, et al. (2004) Surgery and adjuvant dendritic cell-based tumour vaccination for patients with relapsed malignant glioma, a feasibility study. *Br J Cancer* 91: 1656–1662.
- Wheeler CJ, Black KL, Liu G, Mazer M, Zhang XX, et al. (2008) Vaccination elicits correlated immune and clinical responses in glioblastoma multiforme patients. *Cancer Res* 68: 5955–5964.
- Yamanaka R, Homma J, Yajima N, Tsuchiya N, Sano M, et al. (2005) Clinical evaluation of dendritic cell vaccination for patients with recurrent glioma: results of a clinical phase I/II trial. *Clin Cancer Res* 11: 4160–4167.

To determine if there was any difference in PSA slopes between those that did have an immunologic response (DTH responders to LNCaP lysate) and those that did not (DTH non-responders to LNCaP lysate), a second model, stratified by these response indicators (with separate knots for the two groups), was fitted and the likelihood ratio test was conducted. Similarly, a third model was fitted, this time, stratified by PSA at study start of <1 ng/ml or ≥ 1 ng/ml. The models with stratification were then compared to the general model. All models were fitted and hypotheses were tested using the *lme* package from R (www.R-project.org). The Wilcoxon matched-paired signed rank test was used to determine statistical significance of the difference in PSADT between phases (www.fon.hum.uva.nl/service/statistics/signed_rank_test.html). A PSADT can be a positive number as a result of rising PSA levels or a negative number as a result of declining PSA levels. For the purpose of statistical analysis, negative PSADT (indicating declining PSAs) were replaced with 9999 months to represent an infinitely long doubling time so that they rank higher than any value for which doubling time was a positive number. Differences were deemed significant if the p-value was less than 0.05.

Supporting Information

Checklist S1 Consort checklist.

Found at: doi:10.1371/journal.pone.0012367.s001 (0.13 MB DOC)

Protocol S1 FDA-approved IND 10710 protocol.

Found at: doi:10.1371/journal.pone.0012367.s002 (0.58 MB DOC)

Acknowledgments

We thank Michel Sadelain for helpful discussions, members of the Darnell laboratory for critical discussion and review of the manuscript, members of the Rockefeller University Hospital Nursing Staff for their compassionate care of the study participants, members of the MSKCC clinical and research nurses, Gabrielle Aruz, Anthony Delacruz, and Tracy Smart-Curley, for their assistance with study patients, Sarah Schlesinger and Mary Marovich for help drafting SOPs, Stephen Paget for advice regarding relevance of ANAs, and Denise Larone for help with release criteria. The authors are grateful for extraordinary support from David Koch. RBD is an Investigator of the Howard Hughes Medical Institute.

21. Yu JS, Liu G, Ying H, Yong WH, Black KL, et al. (2004) Vaccination with tumor lysate-pulsed dendritic cells elicits antigen-specific, cytotoxic T-cells in patients with malignant glioma. *Cancer Res* 64: 4973–4979.
22. Simons JW, Mikhak B, Chang JF, DeMarzo AM, Carducci MA, et al. (1999) Induction of immunity to prostate cancer antigens: results of a clinical trial of vaccination with irradiated autologous prostate tumor cells engineered to secrete granulocyte-macrophage colony-stimulating factor using ex vivo gene transfer. *Cancer Res* 59: 5160–5168.
23. Palucka AK, Ueno H, Connolly J, Kerneis-Norvell F, Blanck JP, et al. (2006) Dendritic cells loaded with killed allogeneic melanoma cells can induce objective clinical responses and MART-1 specific CD8+ T-cell immunity. *J Immunother* 29: 545–557.
24. Neidhardt-Berard EM, Berard F, Banchereau J, Palucka AK (2004) Dendritic cells loaded with killed breast cancer cells induce differentiation of tumor-specific cytotoxic T lymphocytes. *Breast Cancer Res* 6: R322–8.
25. Koido S, Nikrui N, Ohana M, Xia J, Tanaka Y, et al. (2005) Assessment of fusion cells from patient-derived ovarian carcinoma cells and dendritic cells as a vaccine for clinical use. *Gynecol Oncol* 99: 462–471.
26. Geiger JD, Hutchinson RJ, Hohenkirk LF, McKenna EA, Yanik GA, et al. (2001) Vaccination of pediatric solid tumor patients with tumor lysate-pulsed dendritic cells can expand specific T cells and mediate tumor regression. *Cancer Res* 61: 8513–8519.
27. Saito H, Frleta D, Dubsky P, Palucka AK (2006) Dendritic cell-based vaccination against cancer. *Hematol Oncol Clin North Am* 20: 689–710.
28. Albert ML (2004) Death-defying immunity: do apoptotic cells influence antigen processing and presentation? *Nat Rev Immunol* 4: 223–231.
29. Orange DE, Jegathesan M, Blachere NE, Frank MO, Scher HI, et al. (2004) Effective antigen cross-presentation by prostate cancer patients' dendritic cells: implications for prostate cancer immunotherapy. *Prostate Cancer Prostatic Dis* 7: 63–72.
30. Putz T, Ramoner R, Gander H, Rahm A, Bartsch G, et al. (2004) Monitoring of CD4+ and CD8+ T-cell responses after dendritic cell-based immunotherapy using CFSE dye dilution analysis. *J Clin Immunol* 24: 653–663.
31. Banchereau J, Palucka AK, Dhodapkar M, Burkeholder S, Taquet N, et al. (2001) Immune and clinical responses in patients with metastatic melanoma to CD34(+) progenitor-derived dendritic cell vaccine. *Cancer Res* 61: 6451–6458.
32. Fong L, Brockstedt D, Benike C, Wu L, Engleman EG (2001) Dendritic cells injected via different routes induce immunity in cancer patients. *J Immunol* 166: 4254–4259.
33. Raychaudhuri S, Rock KL (1998) Fully mobilizing host defense: building better vaccines. *Nat Biotechnol* 16: 1025–1031.
34. Palucka AK, Connolly J, Ueno H, Kohl J, Paczesny S, et al. (2005) Spontaneous proliferation and type 2 cytokine secretion by CD4+T cells in patients with metastatic melanoma vaccinated with antigen-pulsed dendritic cells. *J Clin Immunol* 25: 288–295.
35. Bui JD, Schreiber RD (2007) Cancer immunosurveillance, immunoediting and inflammation: independent or interdependent processes? *Curr Opin Immunol* 19: 203–208.
36. Zang X, Allison JP (2007) The B7 family and cancer therapy: costimulation and coinhibition. *Clin Cancer Res* 13: 5271–5279.
37. Fong L, Kwek SS, O'Brien S, Kavanagh B, McNeel DG, et al. (2009) Potentiating endogenous antitumor immunity to prostate cancer through combination immunotherapy with CTLA4 blockade and GM-CSF. *Cancer Res* 69: 609–615.
38. Peggs KS, Quezada SA, Korman AJ, Allison JP (2006) Principles and use of anti-CTLA4 antibody in human cancer immunotherapy. *Curr Opin Immunol* 18: 206–213.
39. Sallusto F, Lanzavecchia A (1994) Efficient presentation of soluble antigen by cultured human dendritic cells is maintained by granulocyte/macrophage colony-stimulating factor plus interleukin 4 and downregulated by tumor necrosis factor alpha. *J Exp Med* 179: 1109–1118.
40. Rieser C, Bock G, Klocker H, Bartsch G, Thurnher M (1997) Prostaglandin E2 and tumor necrosis factor alpha cooperate to activate human dendritic cells: synergistic activation of interleukin 12 production. *J Exp Med* 186: 1603–1608.