

Human herpesvirus 8 genotype E in patients with Kaposi sarcoma, Peru.

Olivier Cassar, Marie Lise Blondot, Salim Mohanna, Gregory Jouvion, Francisco Bravo, Vicente Maco, Renan Duprez, Michel Huerre, Eduardo Gotuzzo, Antoine Gessain

► **To cite this version:**

Olivier Cassar, Marie Lise Blondot, Salim Mohanna, Gregory Jouvion, Francisco Bravo, et al.. Human herpesvirus 8 genotype E in patients with Kaposi sarcoma, Peru.. *Emerging Infectious Diseases*, Centers for Disease Control and Prevention, 2010, 16 (9), pp.1459-62. 10.3201/eid1609.100381 . pasteur-00530121

HAL Id: pasteur-00530121

<https://hal-pasteur.archives-ouvertes.fr/pasteur-00530121>

Submitted on 4 Feb 2011

HAL is a multi-disciplinary open access archive for the deposit and dissemination of scientific research documents, whether they are published or not. The documents may come from teaching and research institutions in France or abroad, or from public or private research centers.

L'archive ouverte pluridisciplinaire **HAL**, est destinée au dépôt et à la diffusion de documents scientifiques de niveau recherche, publiés ou non, émanant des établissements d'enseignement et de recherche français ou étrangers, des laboratoires publics ou privés.

Human Herpesvirus 8 Genotype E in Patients with Kaposi Sarcoma, Peru

Olivier Cassar,¹ Marie-Lise Blondot,¹
Salim Mohanna, Gregory Jouvion,
Francisco Bravo, Vicente Maco, Renan Duprez,
Michel Huerre, Eduardo Gotuzzo,
and Antoine Gessain

To determine human herpesvirus 8 (HHV-8) K1 genotypes in patients with Kaposi sarcoma (KS) from Peru, we characterized HHV-8 in 25 KS biopsy samples. Our findings of 8 A, 1 B, 14 C, and 2 E subtypes showed high HHV-8 diversity in these patients and association between E genotype and KS development.

Human herpesvirus 8 (HHV-8; also known as Kaposi sarcoma-associated herpesvirus) is the etiologic agent of all forms of Kaposi sarcoma (KS) (1,2). In 2002, the number of KS cases worldwide was ≈65,000, nearly 1% of all diagnosed cancer cases (3). KS occurs commonly during HIV-1 infection (AIDS-KS); in transplant recipients; and in persons not infected with HIV, predominantly elderly men of Mediterranean and Middle Eastern origin (classic KS) or in children and adult men from eastern and Central Africa (endemic KS).

Sequence analysis of the highly variable open reading frame (ORF) K1 of HHV-8 has enabled the identification of 5 main HHV-8 molecular subtypes, A–E (4). A and C subtypes are prevalent in Europe, Mediterranean countries, the United States, northwestern People's Republic of China, and southern Siberia; subtype B, in sub-Saharan Africa; and subtype D, in Japan and Oceania. Subtype E is found among Native Americans (5–9). To our knowledge, KS has been reported in patients infected by all HHV-8 subtypes, except E.

Author affiliations: Institut Pasteur, Paris, France (O. Cassar, M.-L. Blondot, G. Jouvion, R. Duprez, M. Huerre, A. Gessain); Centre National de la Recherche Scientifique, Paris (O. Cassar, M.-L. Blondot, R. Duprez, A. Gessain); and Universidad Peruana Cayetano Heredia, Lima, Peru (S. Mohanna, F. Bravo, V. Maco, E. Gotuzzo)

DOI: 10.3201/eid1609.100381

Recent studies demonstrated that classic KS is common in Peru and that AIDS-KS incidence is increasing because of the spread of HIV infection (10,11). Classic and epidemic KS occurred in patients of Amerindian origin (Quechuas) and in mestizos, reflecting the multiethnic origin of the Peruvian population.

A goal of our study was to determine the HHV-8 genotypes for a series of classic KS or AIDS-KS cases in Peru. We also aimed to report KS in patients infected by an E subtype.

The Study

We studied a series of 36 KS tumors diagnosed during 1989–2002 at the Hospital Nacional Cayetano Heredia in Lima. All these formalin-fixed, paraffin-embedded biopsy samples were stained by using hematoxylin–eosin stain and Perl methods. Immunohistochemistry was performed on deparaffinized sections by using monoclonal antibodies directed against CD34 and latent nuclear antigen (LANA-1) (12).

DNA was extracted from paraffin blocks by using the QIAamp DNA Mini Kit (QIAGEN GmbH, Hilden, Germany). HHV-8 infection was determined by nested PCR to obtain a 220-bp (variable region [VR] 1–inner fragment) and a 240–300-bp (VR2-inner) fragment of the ORF-K1 (13). Phylogenetic trees were generated with the neighbor-joining method (PAUP* version 4.0b10; <http://paup.csit.fsu.edu>) on fragments of either 309 bp (VR1-outer) or 165 bp (VR1-inner) of the VR1 (K1 gene) by using different sequence prototypes of the 4 major HHV-8 genotypes (13,14).

Histopathologic analysis was originally conducted on 36 biopsy samples, mostly from skin, diagnosed as KS. Three patterns were observed by hematoxylin–eosin stained specimens. The first was characterized by dilated, irregular, and angulated blood vessels in the dermis, associated with a variable number of lymphocytes. In the second pattern, dermal vascular channels lined by plump spindle cells were seen; some of these spindle cells coalesced to form aggregates, which were poorly delineated and often located around blood vessels. The third pattern (nearly half of all biopsy samples) was characterized by well-delineated sheets and bundles of spindle cells, which coalesced to form nodules. The proportion of spindle cells labeled with the monoclonal antibody LANA-1 varied according to the histopathologic pattern; the bundles and sheets of spindle cells in the third pattern displayed the strongest signal (Figure 1, panel A).

DNA was extracted from the 36 formalin-fixed, paraffin-embedded biopsy samples; DNA quantity and quality were appropriate in 30 biopsy samples. A faint PCR signal of the expected size was seen after single PCR in

¹These authors contributed equally to this article.

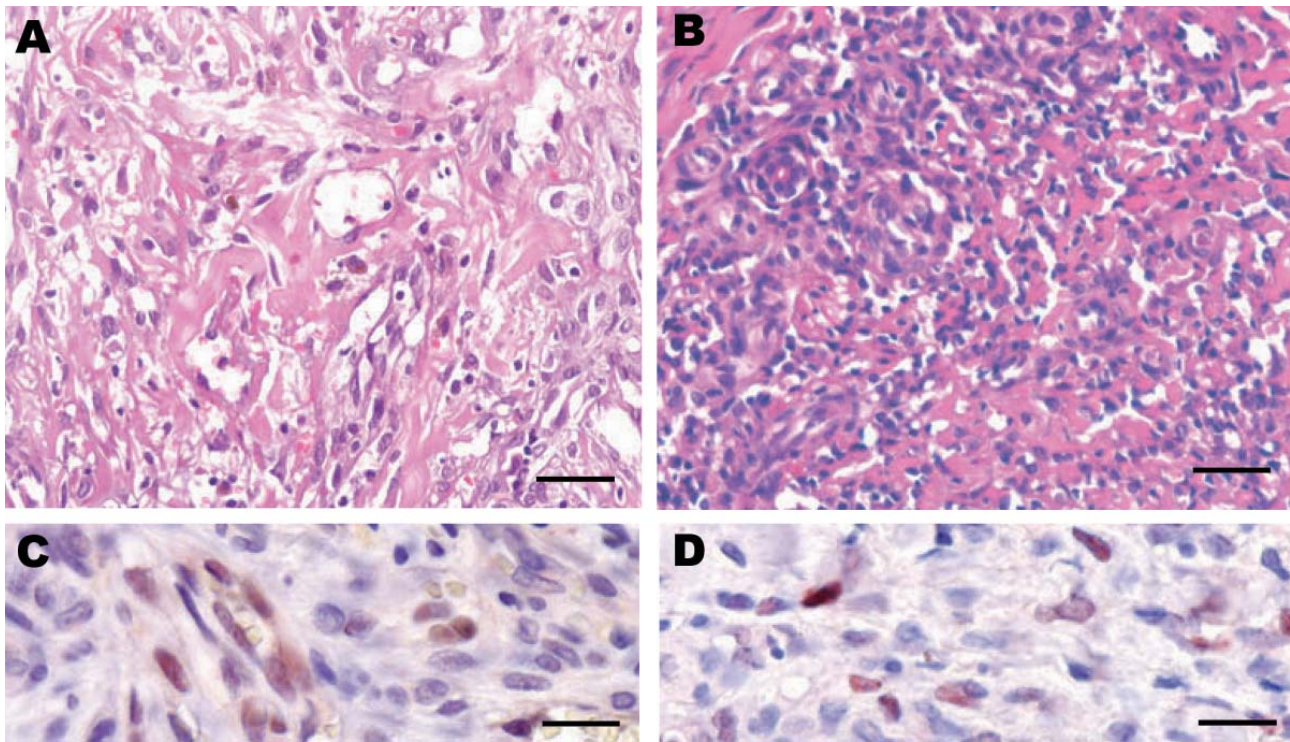


Figure 1. Histologic patterns of cutaneous Kaposi sarcoma (KS) associated with a human herpesvirus 8 (HHV-8) type E infection. Patient 1: A) The spindle cells were organized as bundles, forming vascular slit-like spaces containing erythrocytes. Some macrophages containing hemosiderin were observed (data not shown). C) Immunohistochemical testing showed a positive signal for HHV-8 infection (latent nuclear antigen [LANA-1]) and CD34 (data not shown). The Perls staining also gave highly positive results (data not shown). (Patient 1 corresponds to the first patient [04/0480] in the online Appendix Table (www.cdc.gov/eid/content/16/9/1459-appT.htm), a 51-year-old mestizo man who had HIV-1 infection. Patient 2: B) Spindle cells forming rare vascular channels, with numerous lymphocytes, plasma cells, and macrophages. D) Immunohistochemistry showed a lower positive signal for HHV-8 infection (LANA-1) and CD34 (data not shown). Few cells displayed a positive Perls staining (data not shown). (Patient 2 corresponds to the tenth patient [06/0772] in the online Appendix Table, a 24-year-old mestizo man with HIV-1 infection.)

12 samples for VR1 (VR1-outer) and in 4 cases for VR2 (VR2-outer) amplification. After nested PCR, a signal was obtained in 25 cases for VR1-inner and in 17 cases for VR2-inner (online Appendix Table, www.cdc.gov/eid/content/16/9/1459-TechApp.htm). After cloning and sequencing procedures, the HHV-8 genotype was obtained for 25 different KS cases, of which 8 genotypes belonged to the A subtype, including an A5, and 14 belonged to the C subtype. An E subtype was identified for 2 patients. In 1 case, a B subtype was determined. Among these 25 sequences, 16 were unique and 9 formed 3 groups of identical sequences. The 25 VR1-inner sequences exhibited 0%–24.4% nt divergence and 0%–43.1% aa acid divergence among pairwise comparisons. When the VR1-outer and VR2-inner sequences (536 bp) of the 2 E subtype strains in Peru were combined, the nucleotide divergence was \approx 7% and reached 10% at the amino acid level. The 04480 and 06772 E subtype strains were closer to the Brazilian Amerindian strains (Kat, Sio, Wai, Tir, Tupi) than to the Ecuadorian (Hua1, Hua2, Hua3) or French Guianan Amerindian (Wagu) strains.

Phylogenetic analyses were performed by using 2 sets of sequences; 25 VR1-inner (Figure 2) and 11 VR1-outer sequences (data not shown). Forty-seven prototype strain sequences were added. The main molecular HHV-8 subtypes, A–E, were identified on the basis of consistent topology and bootstrap values obtained (Figure 2; data are not shown for other phylogenetic analyses performed, for example with the 11 VR1-outer sequences obtained after the first round of PCR). Among the 25 VR1-inner sequences, 22/25 were located in the large A/C subtype, and 8 strains belong to the A subtype, with strains scattered among 3 different subgroups (Figure 2). The 06758 strain belongs to the typical sub-Saharan A5 group. Fourteen strains are distributed among different groups in the C subtype, and the remaining sequences clustered in the sub-Saharan African B (04489) and Amerindian E (06772 and 04480) subtypes.

Two AIDS-KS mestizo patients (Figure 1) were thus found to be infected by typical E subtype HHV-8 strains: a 51-year-old man with a tumor on his neck and a 24-year-old man with multiple tumors on the upper limbs. These

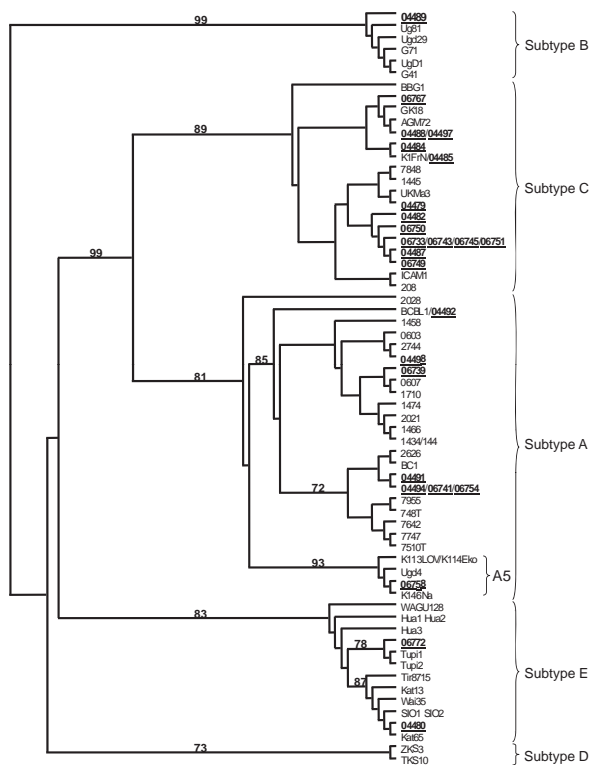


Figure 2. Unrooted phylogenetic tree generated with the neighbor-joining method (PAUP* version 4.0b10; <http://paup.csit.fsu.edu>) on the best 165-bp alignment of the variable region [VR] 1 comprising 79 human herpesvirus 8 nt sequences, including 25 novel sequences generated (GenBank accession nos. GU827339–GU827363). The strains were aligned with Data Analysis in Molecular Biology software (<http://dambe.bio.uottawa.ca/software.asp>), and the final alignment was submitted to the ModelTest software version 3.6 (<http://darwin.uvigo.es/software/modeltest.html>) to select, according to the Akaike Information Criterion, the best model to apply to phylogenetic analyses. The selected model was the general time reversible model. The reliability of the inferred tree was evaluated by bootstrap analysis on 1,000 replicates. Bootstrap support is noted on the branches of the tree.

tumors were mostly macroscopic nodules but displayed major histologic differences (Figure 1). CD34 (data not shown) and LANA-1–positive cells (Figure 1) were noted in both KS biopsy samples.

Conclusions

HHV-8 K1 gene characterization of KS tumor biopsy samples demonstrated high molecular genotype diversity, including 4 of the 5 main known molecular subtypes. The most frequent were the A and C subtypes, typically of European origin. Other patients were infected by a sub-Saharan African HHV-8 genotype (1 A5 and 1 B) or by HHV-8 genotype E strains of Amerindian origin.

Such findings were not unexpected because persons in Peru are of many ethnicities. Indeed, the genetic background of the Peruvian population is diverse, reflecting the multiple waves or populations that colonized the country during the last millennium. Schematically, this began with different Amerindians groups in the Lithic period (infected possibly with E subtype), followed by the Spanish colonization of the Americas mainly from southern Europe (infected possibly by A and C subtypes) and later slave trade from Africa (infected by A5 or B subtypes). Such HHV-8 strain diversity has been previously observed in French Guiana (6,14).

HHV-8 genotype E previously has been found exclusively in Amerindians from Central and South America, including Brazil (5,9), Ecuador (7), and French Guiana (6). In each instance, HHV-8 was detected in blood samples, and there was some debate about the presence/development of KS in such highly infected populations (15).

We demonstrated that KS can occur in HHV-8 subtype E–infected persons. Indeed, in 2 AIDS-KS patients, an E genotype was characterized in the tumor lesions. Further studies are ongoing to provide new insights into the distribution and genetic epidemiology of such HHV-8 infection in Amerindian populations.

Acknowledgments

We dedicate this study to the memory of Juan Carlos Ferrufino, who was chief of the Pathology Department at Hospital Nacional Cayetano Heredia and founding member of the Human Herpesvirus-8 and Kaposi Sarcoma Working Group.

G.J. was supported by a Roux Fellowship from the Institut Pasteur. R.D. was supported by fellowships from the Ligue Nationale contre le Cancer, the Caisse Nationale d'Assurance Maladies et Maternité des Travailleurs non Salariés des Professions non Agricoles. This work was supported in part by grants from the Association pour la Recherche sur le Cancer, the Cancéropole/Ile de France, and the Centre National de la Recherche Scientifique (Unité de Recherche Associée 3015).

Dr Cassar is a researcher working at the Institut Pasteur in Paris, France. His primary research interest is the clinical and molecular epidemiology and physiopathology of dengue viruses. He is now working on the epidemiology of human T-lymphotropic virus type 1 and HHV-8 in populations of different origins, such as Amerindians and Melanesians.

References

1. Dourmishev LA, Dourmishev AL, Palmeri D, Schwartz RA, Lukac DM. Molecular genetics of Kaposi's sarcoma-associated herpesvirus (human herpesvirus 8) epidemiology and pathogenesis. *Microbiol Mol Biol Rev.* 2003;67:175–212. DOI: 10.1128/MMBR.67.2.175-212.2003

2. Schulz TF. The pleiotropic effects of Kaposi's sarcoma herpesvirus. *J Pathol.* 2006;208:187–98. DOI: 10.1002/path.1904
3. Parkin DM. The global health burden of infection-associated cancers in the year 2002. *Int J Cancer.* 2006;118:3030–44. DOI: 10.1002/ijc.21731
4. Hayward GS, Zong JC. Modern evolutionary history of the human KSHV genome. *Curr Top Microbiol Immunol.* 2007;312:1–42. DOI: 10.1007/978-3-540-34344-8_1
5. Biggar RJ, Whitby D, Marshall V, Linhares AC, Black F. Human herpesvirus 8 in Brazilian Amerindians: a hyperendemic population with a new subtype. *J Infect Dis.* 2000;181:1562–8. DOI: 10.1086/315456
6. Kazanji M, Dussart P, Duprez R, Tortevoeye P, Pouliquen JF, Vandekerckhove J, et al. Serological and molecular evidence that human herpesvirus 8 is endemic among Amerindians in French Guiana. *J Infect Dis.* 2005;192:1525–9. DOI: 10.1086/491744
7. Whitby D, Marshall VA, Bagni RK, Wang CD, Gamache CJ, Guzman JR, et al. Genotypic characterization of Kaposi's sarcoma-associated herpesvirus in asymptomatic infected subjects from isolated populations. *J Gen Virol.* 2004;85:155–63. DOI: 10.1099/vir.0.19465-0
8. de Souza VA, Sumita LM, Nascimento MC, Oliveira J, Mascheretti M, Quiroga M, et al. Human herpesvirus-8 infection and oral shedding in Amerindian and non-Amerindian populations in the Brazilian Amazon region. *J Infect Dis.* 2007;196:844–52. DOI: 10.1086/520549
9. Ishak MO, Martins RN, Machado PR, de Souza LL, Machado LF, Azevedo VN, et al. High diversity of HHV-8 molecular subtypes in the Amazon region of Brazil: evidence of an ancient human infection. *J Med Virol.* 2007;79:1537–44. DOI: 10.1002/jmv.20995
10. Mohanna S, Bravo F, Ferrufino JC, Sanchez J, Gotuzzo E. Classic Kaposi's sarcoma presenting in the oral cavity of two HIV-negative Quechua patients. *Med Oral Patol Oral Cir Bucal.* 2007;12:E365–8.
11. Mohanna S, Portillo JA, Carriquiry G, Oliveira J, Mascheretti M, Quiroga M, et al. Human herpesvirus-8 in Peruvian blood donors: a population with hyperendemic disease? *Clin Infect Dis.* 2007;44:558–61. DOI: 10.1086/511044
12. Hbid O, Belloul L, Fajali N, Ismaili N, Duprez R, Tanguy M, et al. Kaposi's sarcoma in Morocco: a pathological study with immunostaining for human herpesvirus-8 LNA-1. *Pathology.* 2005;37:288–95. DOI: 10.1080/00313020500169453
13. Kadyrova E, Lacoste V, Duprez R, Pozharissky K, Molochkov V, Huerre M, et al. Molecular epidemiology of Kaposi's sarcoma-associated herpesvirus/human herpesvirus 8 strains from Russian patients with classic, posttransplant, and AIDS-associated Kaposi's sarcoma. *J Med Virol.* 2003;71:548–56. DOI: 10.1002/jmv.10530
14. Lacoste V, Judde JG, Briere J, Tulliez M, Garin B, Kassa-Kelembho E, et al. Molecular epidemiology of human herpesvirus 8 in Africa: both B and A5 K1 genotypes, as well as the M and P genotypes of K14.1/K15 loci, are frequent and widespread. *Virology.* 2000;278:60–74. DOI: 10.1006/viro.2000.0629
15. Dukers NH, Rezza G. Human herpesvirus 8 epidemiology: what we do and do not know. *AIDS.* 2003;17:1717–30. DOI: 10.1097/00002030-200308150-00001

Address for correspondence: Antoine Gessain, Institut Pasteur, Unité d'Epidémiologie et Physiopathologie des Virus Oncogènes, Département de Virologie F-75015 Paris, CNRS, URA3015, F-75015 Paris, France; email: agessain@pasteur.fr

Get the content you want delivered to your inbox.



Table of Contents
Podcasts
Ahead of Print Articles
Medscape CME™
Specialized Content

Online subscription: www.cdc.gov/ncidod/eid/subscrib.htm