

# Differential responses of the mosquito *Aedes albopictus* from the Indian Ocean region to two chikungunya isolates

Estelle Martin, Sara Moutailler, Yoann Madec, Anna-Bella Failloux

► **To cite this version:**

Estelle Martin, Sara Moutailler, Yoann Madec, Anna-Bella Failloux. Differential responses of the mosquito *Aedes albopictus* from the Indian Ocean region to two chikungunya isolates. *BMC Ecology, BioMed Central*, 2010, 10 (1), pp.8. 10.1186/1472-6785-10-8 . pasteur-00467674

**HAL Id: pasteur-00467674**

**<https://hal-pasteur.archives-ouvertes.fr/pasteur-00467674>**

Submitted on 27 Mar 2010

**HAL** is a multi-disciplinary open access archive for the deposit and dissemination of scientific research documents, whether they are published or not. The documents may come from teaching and research institutions in France or abroad, or from public or private research centers.

L'archive ouverte pluridisciplinaire **HAL**, est destinée au dépôt et à la diffusion de documents scientifiques de niveau recherche, publiés ou non, émanant des établissements d'enseignement et de recherche français ou étrangers, des laboratoires publics ou privés.

RESEARCH ARTICLE

Open Access

# Differential responses of the mosquito *Aedes albopictus* from the Indian Ocean region to two chikungunya isolates

Estelle Martin<sup>1</sup>, Sara Moutailler<sup>1</sup>, Yoann Madec<sup>2</sup>, Anna-Bella Failloux<sup>1\*</sup>

## Abstract

**Background:** *Aedes aegypti* and *Aedes albopictus* are both vectors of chikungunya virus (CHIKV). The two *Aedes* species co-exist in the Indian Ocean region and were involved in the 2005-2006 CHIKV outbreaks. In the Reunion Island, a single mutation in the viral envelope has been selected that leads to high levels of replication in *Ae. albopictus*, and a short extrinsic incubation period as the virus could be found in saliva as early as two days after infection. An important question is whether this variant is associated with adverse effects impacting some mosquito life-history traits such as survival and reproduction.

**Results:** We performed experimental infections using three mosquito strains of *Ae. aegypti* Mayotte and *Ae. albopictus* (Mayotte and Reunion), and two CHIKV strains (E1-226A and E1-226V). *Ae. aegypti* Mayotte were similarly susceptible to both viral strains, whereas *Ae. albopictus* Mayotte and *Ae. albopictus* Reunion were more susceptible to CHIKV E1-226V than to E1-226A. In terms of life-history traits measured by examining mosquito survival and reproduction, we found that: (1) differences were observed between responses of mosquito species to the two viruses, (2) CHIKV infection only affected significantly some life-history traits of *Ae. albopictus* Reunion and not of the other two mosquito strains, and (3) CHIKV reduced the lifespan of *Ae. albopictus* Reunion and shortened the time before egg laying.

**Conclusion:** We demonstrated that CHIKV only reduces the survival of *Ae. albopictus* from the Reunion Island. By laying eggs just before death, reproduction of *Ae. albopictus* from the Reunion Island is not reduced since other parameters characterizing oviposition and hatching were not affected.

## Background

Chikungunya virus (CHIKV) is an arbovirus (*Togaviridae* family, *Alphavirus* genus) transmitted by *Aedes* mosquito species, that usually induces an acute illness in humans characterized by fever, rash, and incapacitating arthralgia [1]. The virus was first described in Tanzania in 1952 [2]. In Africa, it has been maintained in a sylvatic cycle involving forest mosquitoes feeding preferentially on wild non-human primates [3,4]. The virus was later introduced into Asia where it circulates within an urban cycle; only an inter-human transmission cycle is described on this continent, involving *Aedes aegypti* and *Aedes albopictus* as vectors [5,6].

In early 2005, CHIKV was introduced into the Indian Ocean region, probably by viremic travelers returning from Kenya where an outbreak had started in June 2004 [7]. Later, in 2005 and 2006, CHIKV spread across the Indian Ocean islands (Comoros, Madagascar, Mayotte, Seychelles, Mauritius, the Reunion Island). Afterwards, CHIKV expanded into Asia [8-10] and Africa [11,12]. Surprisingly, an autochthonous CHIKV outbreak was reported in Europe in the Ravenna region of Italy during the summer of 2007 [13]. Most recent CHIKV outbreaks were related to the mosquito *Ae. albopictus* whose geographical distribution has been expanding into new tropical and temperate regions over the past decades [14]. In the Indian Ocean region, *Ae. aegypti* and *Ae. albopictus* are present together or alone; both vectors can be involved in the CHIKV transmission cycle.

\* Correspondence: afaillou@pasteur.fr

<sup>1</sup>Génétique moléculaire des Bunyavirus, Institut Pasteur, 25-28 rue du Dr Roux, 75724 Paris cedex 15, France

Phylogenetic analyses based on sequences of the E1 gene encoding an envelope glycoprotein revealed that the Indian Ocean isolates belonged to the Eastern/Central/Southern African genotype [15]. A switch to a new variant operated in the Reunion Island from the end of 2005, where most CHIKV isolated from patients presented an amino-acid substitution in the E1 glycoprotein, from an alanine (E1-226A) to a valine (E1-226V). This mutation enhances transmission by *Ae. albopictus* [16]. The new variant spread easily through the Indian Ocean region and has thus been found in countries where *Ae. albopictus* is the main *Aedes* species. Subsequent CHIKV outbreaks were related to the transmission of the E1-226V variant by *Ae. albopictus*.

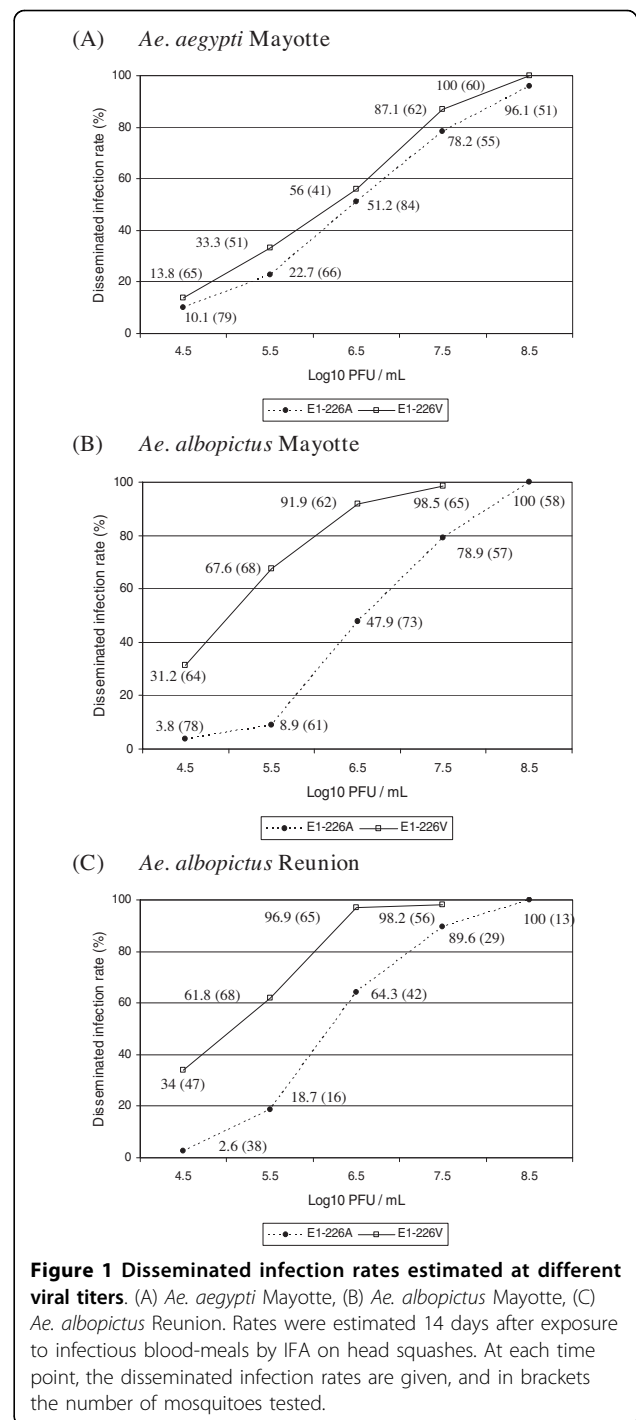
By experimental infections, we demonstrated that from day 3 post-infection (pi), *Aedes* mosquitoes could produce 1,000-fold more viral particles than those ingested [17]. Although it was believed for many years that infection with an arbovirus had no deleterious effects upon its arthropod host, recent studies indicated that such viral infections may not be benign. When compared with uninfected individuals, viral infections in mosquitoes can reduce fecundity [18], the ability to get a blood-meal [18,19], and survival [20-22]. The effect on the survival of the mosquito vector is important in determining vector capacity. How a vector responds to infection by a virus? Among the strategies developed to compensate for the cost of infection by a pathogen, a host could reduce the harm caused by infection by tolerance, which involves the alteration of host life-history traits. These latter are defined as traits relevant to the allocation of resources in reproduction, survival and growth: for example the number of offspring, age of first reproduction, adult body size etc.

In this work, we have analyzed the effects of CHIKV infection on survival and reproduction of two mosquito species, *Ae. aegypti* and *Ae. albopictus*. Changes in survival and reproduction induced upon infection with two CHIKV strains, the original E1-226A strain and the new E1-226V variant were studied.

## Results

### Susceptibility of *Aedes* species to CHIKV strains

Batches of mosquitoes were orally exposed to serial 10-fold dilutions of CHIKV E1-226A and CHIKV E1-226V (Figure 1). To determine whether disseminated infection rates correlated with blood-meal titers, surviving mosquitoes were analyzed at day 14 pi by IFA on head squashes. *Ae. aegypti* Mayotte showed similar susceptibility towards both CHIKV E1-226A and CHIKV E1-226V ( $p > 0.05$ ); at a titer of  $10^{6.5}$  PFU/mL, 56.1% of mosquitoes showed a disseminated infection when infected with CHIKV E1-226V and 51.2% did with respect to CHIKV E1-226A (Figure 1A). On the other



hand, *Ae. albopictus* Mayotte were found to be 1-2 fold more susceptible to CHIKV E1-226V than to CHIKV E1-226A ( $p < 0.01$ ); at a titer of  $10^{6.5}$  PFU/mL, 47.9% of mosquitoes presented a disseminated infection when infected with CHIKV E1-226A, in contrast to 91.91% with CHIKV E1-226V (Figure 1B). Lastly, *Ae. albopictus* Reunion displayed the same profile as *Ae. albopictus* Mayotte, with significant differences between viruses at

each titer point ( $p < 0.01$ ) except when the titer was high (e.g.  $10^{7.5}$  PFU/mL) where both viral strains gave similar disseminated infection rates ( $p = 1$ ). All *Aedes* species examined presented a similar susceptibility to CHIKV E1-226A at a titer of  $10^{6.5}$  PFU/mL ( $p > 0.05$ ). At this same viral titer, *Ae. albopictus* (Mayotte and Reunion) presented a higher susceptibility to CHIKV E1-226V than did *Ae. aegypti* Mayotte (Figure 1C). The plateau corresponding to 100% of disseminated infection rate was reached for blood-meal titers higher than  $10^{8.5}$  PFU/mL.

### Survival of mosquitoes

The survival rates for each mosquito species, depending on the trial and according to the virus (NI, CHIKV E1-226A, CHIKV E1-226V), are presented in Figure 2. The infectious blood-meals were at a titer of  $10^{7.5}$  PFU/mL.

For *Ae. aegypti* Mayotte (Figure 2A), each trial led to the same results: the survival curves were not significantly different according to the infection ( $p = 0.70$  and  $p = 0.21$  for trials 1 and 2, respectively). A parametric model was used to estimate the effects on survival of the strain of the virus (NI, CHIKV E1-226A, CHIKV E1-226V) and of the infection status of the mosquito (NI, NDINF, DINF), and to assess the existence of an interaction between these two factors. For this purpose, we combined trials 1 and 2 as no significant difference was detected in NI mosquitoes ( $p = 0.24$ ), or mosquitoes exposed to CHIKV E1-226A ( $p = 0.23$ ) or to CHIKV E1-226V ( $p = 0.94$ ). The risk of death was higher for NDINF mosquitoes compared to NI mosquitoes (Time ratio [TR] (95% confidence interval) [CI]: 0.60 (0.42 - 0.85) with CHIKV E1-226V and 0.49 (0.33 - 0.72) with CHIKV E1-226A). On the other hand, no significant difference in the risk of death was observed between DINF mosquitoes and NI mosquitoes infected with CHIKV E1-226V (TR (95% CI): 1.19 (0.91 - 1.56) and with CHIKV E1-226A (1.10 (0.81 - 1.48)) (Table 1).

For *Ae. albopictus* Mayotte (Figure 2B), the two trials mainly led to the same results: survival curves did not differ significantly according to the virus ( $p = 0.29$  and  $p = 0.05$  for trials 1 and 2, respectively). To compare the survival curves, we combined the two trials since no significant difference was found between NI mosquitoes ( $p = 0.53$ ), mosquitoes exposed to CHIKV E1-226A ( $p = 0.55$ ) and CHIKV E1-226V ( $p = 0.55$ ). Using a parametric survival model, compared to NI mosquitoes, mosquitoes exposed to CHIKV E1-226V were not at greater risk of dying, whether the infection status was NDINF (TR (95% CI): 1.01 (0.87-1.18)) or DINF (TR (95% CI): 1.01 (0.91-1.13)). On the other hand, for mosquitoes exposed to CHIKV E1-226A, NDINF mosquitoes showed a higher risk of dying than did NI mosquitoes (TR (95% CI): 0.80 (0.67-0.95)) while DINF mosquitoes had a significantly

lower risk of dying (TR (95% CI): 1.15 (1.03-1.28)) than did NI mosquitoes (Table 1).

For *Ae. albopictus* Reunion (Figure 2C), the two trials led to the same results: a significant difference in the survival curves was detected according to the virus (both  $p < 10^{-4}$ ). Mosquitoes exposed to CHIKV E1-226A or CHIKV E1-226V had lower survival rates than NI mosquitoes. As the trials differed significantly when NI mosquitoes ( $p < 10^{-4}$ ), those exposed to CHIKV E1-226A ( $p < 10^{-4}$ ) or to CHIKV E1-226V ( $p < 10^{-4}$ ) were analyzed, trials were considered separately. Using a parametric survival model, we found that for mosquitoes exposed to CHIKV E1-226V, NDINF mosquitoes, as well as DINF mosquitoes, were more at risk of dying than NI mosquitoes in both trials (for NDINF mosquitoes, TR (95% CI): 0.43 (0.35-0.54) and 0.52 (0.37-0.74) in trials 1 and 2, respectively; for DINF mosquitoes: 0.63 (0.54-0.74) and 0.70 (0.59-0.83) in trials 1 and 2, respectively). For mosquitoes exposed to CHIKV E1-226A, NDINF and DINF mosquitoes were more at risk of death than NI mosquitoes were, in both trials: for NDINF mosquitoes, 0.46 (0.37-0.58) and 0.39 (0.28-0.54) in trials 1 and 2, respectively; and for DINF mosquitoes: 0.74 (0.65-0.86) and 0.62 (0.52-0.73) in trials 1 and 2, respectively (Table 1).

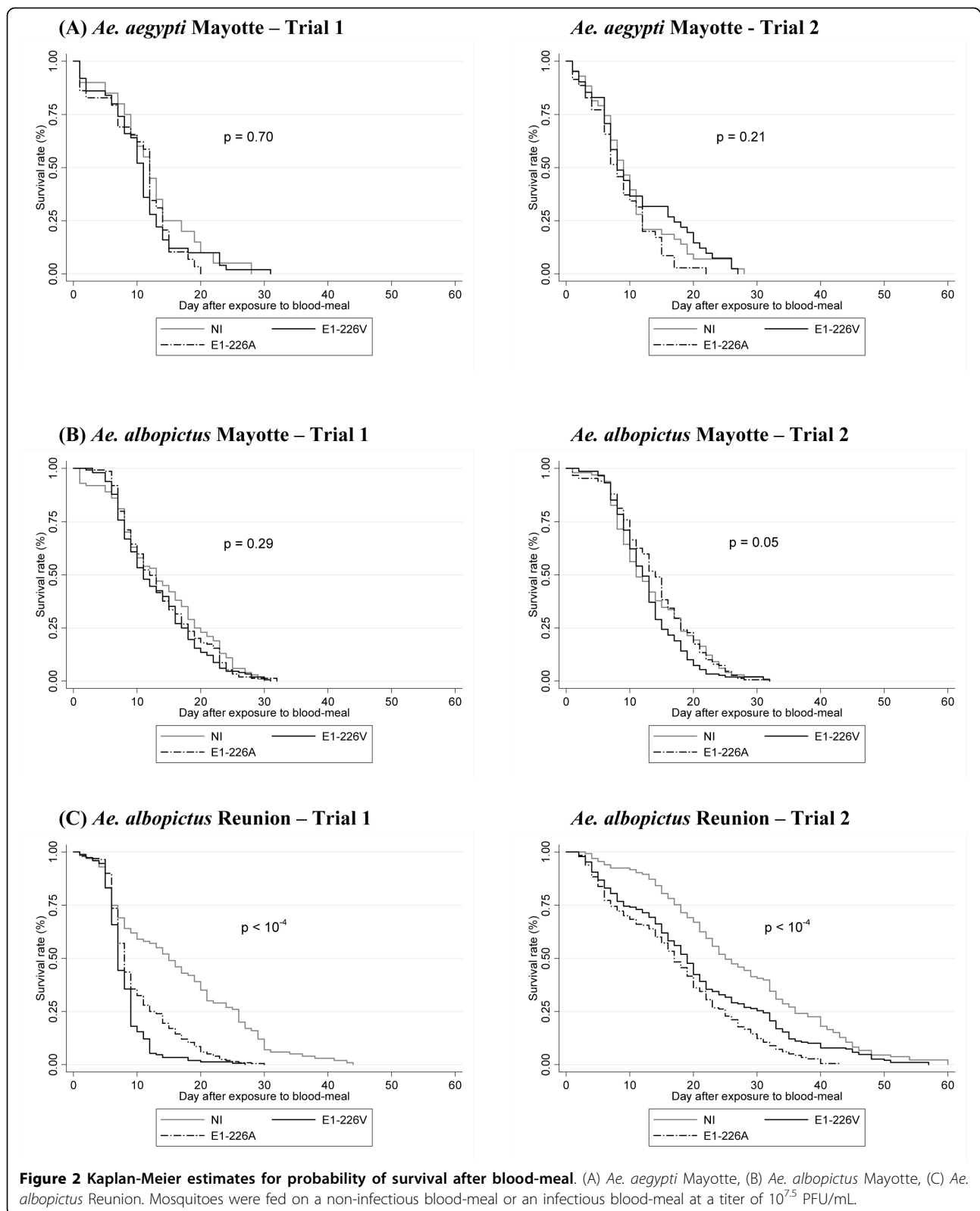
### Oviposition characteristics

#### Time to first egg laying

In *Ae. aegypti* Mayotte, the Kaplan-Meier estimates showed no significant difference in the time to egg laying according to the CHIKV strain ( $p = 0.20$ ) or the infection status of the mosquito ( $p = 0.73$ ). Combining CHIKV strain and infection status as a single factor, the parametric survival model showed no effect of these two factors on the time to egg laying ( $p = 0.47$ ). In *Ae. albopictus* Mayotte, the Kaplan-Meier estimates showed no significant difference in the time to egg laying when the virus ( $p = 0.25$ ) or the infection status of the mosquito ( $p = 0.31$ ) were examined. The parametric survival model did not show any effect of the virus and infection status of mosquito on the time to egg laying ( $p = 0.50$ ). In contrast, in *Ae. albopictus* Reunion, the Kaplan-Meier estimates showed significant differences in the time to egg laying when considering the virus ( $p = 0.03$ ) and the infection status of mosquito ( $p = 0.003$ ). The parametric survival model showed a significant effect of the virus and infection status of mosquitoes on the time to egg laying ( $p < 10^{-4}$ ). Mosquitoes exposed to CHIKV E1-226V and CHIKV E1-226A laid eggs significantly earlier than NI mosquitoes (Table 2).

#### Number of eggs laid per mosquito

The number of eggs laid according to the mosquito species, virus and infection status of the mosquito is described in Table 2. Using a negative binomial regression model for each mosquito species, we did not find



**Figure 2** Kaplan-Meier estimates for probability of survival after blood-meal. (A) *Ae. aegypti* Mayotte, (B) *Ae. albopictus* Mayotte, (C) *Ae. albopictus* Reunion. Mosquitoes were fed on a non-infectious blood-meal or an infectious blood-meal at a titer of  $10^{7.5}$  PFU/mL.

**Table 1 Life duration of *Aedes* mosquitoes**

Viral strain	Status	Life duration ± SD (N)					
		<i>Ae. aegypti</i> Mayotte		<i>Ae. albopictus</i> Mayotte		<i>Ae. albopictus</i> Reunion	
		1	2	1	2	1	2
	NI	12 ± 7 (20)	10 ± 7 (43)	14 ± 8 (100)	14 ± 7 (98)	16 ± 11 (100)	27 ± 13 (133)
E1-226A	NDINF	9.5 ± 7 (8)	5 ± 3 (12)	9 ± 4 (18)	13 ± 8 (38)	8 ± 5 (31)	14 ± 11 (20)
	DINF	11 ± 5 (21)	11 ± 5 (23)	14 ± 6 (131)	15 ± 6 (111)	11 ± 5 (169)	18 ± 10 (160)
E1-226V	NDINF	7 ± 8 (14)	9 ± 5 (12)	13 ± 6 (29)	13 ± 5 (49)	7 ± 5 (36)	21 ± 18 (19)
	DINF	12 ± 5 (36)	12 ± 8 (29)	13 ± 7 (119)	13 ± 5 (99)	8 ± 3 (113)	21 ± 12 (170)

The table shows the life duration of *Ae. aegypti* and *Ae. albopictus* from Mayotte and the Reunion Island after infection with two CHIKV strains: CHIKV E1-226A and CHIKV E1-226V. N corresponds to the number of female analysed, SD to the standard deviation, 1 and 2 to respectively, trial 1 and trial 2, DINF to females with disseminated infection, NDINF to females with non-disseminated infection, and NI to non-infected females.

any evidence that the number of eggs laid differed according to the virus and infection status of the mosquito (data not shown:  $p = 0.79, 0.82,$  and  $0.47$  in *Ae. aegypti* Mayotte, *Ae. albopictus* Mayotte and *Ae. albopictus* Reunion, respectively).

#### Time between first oviposition and mosquito death

We also described the time between the first oviposition and mosquito death using Kaplan-Meier survival curves performed separately for each mosquito species. No difference according to the virus and infection status of the mosquito was observed in *Ae. aegypti* Mayotte ( $p = 0.33$ ) and *Ae. albopictus* Mayotte ( $p = 0.14$ ). In *Ae. albopictus* Reunion, both trials led to the same conclusion: when compared to NI mosquitoes, the time was significantly shorter in mosquitoes infected with CHIKV E1-226A or CHIKV E1-226V irrespective of whether the infection status of the mosquito was NDINF or DINF ( $p = 0.007$  and  $p = 0.001$  for trials 1 and 2, respectively).

#### Hatching characteristics

##### Proportion of mosquitoes with at least one egg hatched

When examining the proportion of females with at least one egg hatched, no significant differences were found whatever the mosquito species, the virus and the infection status of the mosquito, when results were considered for *Ae. aegypti* Mayotte ( $p = 0.71$ ) and *Ae. albopictus* Mayotte ( $p = 0.85$ ). In contrast, for *Ae. albopictus* Reunion a significant difference was found to be attributable to NI mosquitoes ( $p = 0.02$ ) (Table 3).

##### Hatching rate per mosquito

When the hatching rate per mosquito was examined, *Ae. aegypti* Mayotte mosquitoes were found to show a slight difference according to the viral strains ( $p = 0.03$ ) and not to the infection status of the mosquito ( $p = 0.15$ ). Similarly, *Ae. albopictus* Mayotte mosquitoes only showed a significant difference when viral strains were

considered ( $p < 10^{-4}$ ) and not the infection status of the mosquito ( $p = 0.94$ ). Finally, *Ae. albopictus* Reunion also showed differences related to viral strains ( $p < 10^{-2}$ ) and not to the infection status of the mosquito ( $p = 0.12$ ). In most cases, mosquitoes infected with CHIKV E1-226V displayed the highest hatching rates (Table 3). Eggs that issued from infected or non-infected mosquitoes maintained in a BSL-3 laboratory usually showed a lower capacity to hatch than eggs that were kept in an insectarium under standard conditions (data not shown).

#### Replication of CHIKV in mosquitoes

Dead mosquitoes were collected once a day. The number of viral RNA copies present in dead mosquitoes did not vary within a period of 24 h after mosquito death (data not shown). For *Ae. aegypti* Mayotte, mosquitoes had an average of  $10^{5.1} (\pm 10^{0.01})$  viral RNA copies per mosquito when a blood-meal containing CHIKV E1-226A was ingested, and an average of  $10^{5.6} (\pm 10^{0.02})$  viral RNA copies per mosquito that had ingested CHIKV E1-226V (Figure 3A). Following the blood-meal, viral load increased to reach a maximum of  $10^{9.1} \pm 10^{0.3}$  viral RNA copies at day 5 pi for CHIKV E1-226A and between day 4 ( $10^{8.4} \pm 10^{0.7}$ ) and day 6 pi ( $10^{8.6} \pm 10^{0.1}$ ) for CHIKV E1-226V. Later, a slight decrease was observed until day 14 pi ( $10^{7.4} \pm 10^{0.2}$  for CHIKV E1-226A and  $10^{7.3} \pm 10^{0.3}$  for CHIKV E1-226V). For both viruses, many mosquitoes died between day 1 and day 3 pi, especially at day 1 for *Ae. aegypti* Mayotte infected with CHIKV E1-226V.

For *Ae. albopictus* Mayotte, mosquitoes ingested an average of  $10^{5.4} (\pm 10^{0.1})$  viral RNA copies when exposed to a blood-meal containing CHIKV E1-226A and  $10^{5.1} (\pm 10^{0.4})$  with CHIKV E1-226V (Figure 3B). The maximum viral load was reached at day 3 pi after ingestion of both CHIKV E1-226A ( $10^{9.0} \pm 10^{0.1}$ ) and

**Table 2 Oviposition characteristics (delay to laying, number of laid eggs and time between first oviposition and female death)**

Viral strain	Status	Delay to laying ± SD (N)				Number of laid eggs ± SD (N)				Time between first oviposition and female death ± SD (N)								
		Ae. albopictus Mayotte		Ae. albopictus Reunion		Ae. aegypti Mayotte		Ae. albopictus Reunion		Ae. aegypti Mayotte		Ae. albopictus Reunion						
		1	2	1	2	1	2	1	2	1	2	1	2					
NI		6 ± 2 (10)	7 ± 3 (73)	6 ± 2 (80)	10 ± 5 (24)	14 ± 8 (83)	50 ± 18 (10)	39 ± 27 (22)	33 ± 23 (73)	35 ± 23 (80)	30 ± 32 (24)	56 ± 43 (83)	9 ± 8 (20)	7 ± 6 (43)	9 ± 7 (100)	8 ± 7 (98)	14 ± 12 (100)	19 ± 14 (133)
		7 ± 5 ± 0 (4)	5 ± 0 (16)	7 ± 3 (22)	8 ± 3 (11)	9 ± 7 (13)	42 ± 46 (2)	53 ± 39 (4)	35 ± 19 (16)	34 ± 20 (22)	50 ± 49 (11)	41 ± 38 (11)	41 ± 38 (13)	8 ± 7 (8)	3 ± 3 (12)	5 ± 5 (18)	9 ± 8 (38)	8 ± 6 (31)
DINF		6 ± 2 (7)	6 ± 2 (96)	7 ± 3 (82)	9 ± 5 (62)	12 ± 7 (86)	45 ± 18 (7)	37 ± 26 (14)	34 ± 26 (96)	30 ± 22 (82)	40 ± 35 (62)	41 ± 41 (86)	9 ± 5 (21)	7 ± 5 (23)	10 ± 7 (131)	9 ± 7 (111)	7 ± 7 (169)	11 ± 11 (160)
		5 ± 2 (6)	5 ± 1 (3)	8 ± 4 (24)	7 ± 3 (39)	7 ± 4 (9)	35 ± 15 (6)	41 ± 28 (3)	35 ± 27 (24)	24 ± 19 (39)	32 ± 41 (9)	72 ± 58 (8)	5 ± 7 (14)	8 ± 4 (12)	7 ± 5 (29)	7 ± 6 (49)	5 ± 5 (36)	17 ± 19 (19)
E1-226V		7 ± 2 (26)	6 ± 1 (17)	7 ± 3 (91)	8 ± 3 (43)	12 ± 9 (89)	54 ± 17 (26)	52 ± 31 (17)	32 ± 24 (91)	32 ± 23 (74)	38 ± 35 (43)	49 ± 43 (89)	7 ± 7 (36)	9 ± 6 (29)	8 ± 7 (119)	8 ± 6 (99)	5 ± 4 (113)	14 ± 14 (170)
		5 ± 2 (6)	5 ± 1 (3)	8 ± 4 (24)	7 ± 3 (39)	7 ± 4 (9)	35 ± 15 (6)	41 ± 28 (3)	35 ± 27 (24)	24 ± 19 (39)	32 ± 41 (9)	72 ± 58 (8)	5 ± 7 (14)	8 ± 4 (12)	7 ± 5 (29)	7 ± 6 (49)	5 ± 5 (36)	17 ± 19 (19)

Ae. aegypti and Ae. albopictus from Mayotte and the Reunion Island were infected with two CHIKV strains: CHIKV E1-226A and CHIKV E1-226V. N corresponds to the number of female analysed, SD to the standard deviation, 1 and 2 to respectively, trial 1 and trial 2. DINF to females with disseminated infection, NDINF to females with non-disseminated infection, and NI to non-infected females.

CHIKV E1-226V ( $10^{8.1} \pm 10^{0.6}$ ) followed by a plateau until day 11 pi. At day 14 pi, the number of viral RNA copies had decreased to  $10^{6.5} (\pm 10^{0.8})$  for CHIKV E1-226A and  $10^{7.7} (\pm 10^{0.1})$  for CHIKV E1-226V.

In the case of *Ae. albopictus* Reunion, mosquitoes ingested an average of  $10^{5.1} (\pm 10^{0.5})$  RNA copies in the blood-meal containing CHIKV E1-226A and  $10^{5.1} (\pm 10^{0.1})$  RNA copies for CHIKV E1-226V (Figure 3C). After a slight increase in the amount of viral RNAs from day 1 to day 3 pi, a plateau was observed until day 13 pi:  $10^{7.3} \pm 10^{0.3}$  with CHIKV E1-226A and  $10^{7.9} \pm 10^{0.3}$  with CHIKV E1-226V. Dead females exhibited two distinct profiles: (i) females which ensured a viral replication at a level similar to that of live females and (ii) females which did not ensure any viral replication. This is more clear-cut for ALPROV infected with CHIKV E1-226A.

### Discussion

Whichever viral strain was examined (E1-226A or E1-226V), differential responses to CHIKV infection were found according to the mosquito species (*Ae. aegypti* versus *Ae. albopictus*) and their geographical origin (Mayotte versus the Reunion Island). CHIKV infection affected the life-history traits of *Ae. albopictus* from the Reunion Island. We have found that apart from the viral strains, CHIKV infection induced effects on survival, by reducing lifespan, and on oviposition characteristics, by shortening the time to egg laying of *Ae. albopictus* from the Reunion Island.

*Aedes albopictus* is a mosquito species native to Southeast Asia that has spread beyond its natural habitat by means of intercontinental trades [23]. This mosquito is able to transmit various arboviruses in laboratory conditions [14]. In addition to this species, *Ae. aegypti* is native to Africa and comprises two forms: the forest-dwelling *Ae. a. formosus* involved in the enzootic transmission of arboviruses, and the domestic form *Ae. a. aegypti* whose distribution has extended over the tropical region acting as the main vector of dengue viruses [24,25]. Both species are container-breeding mosquitoes that share the same breeding sites. In Asia, the introduced *Ae. aegypti* tends to displace *Ae. albopictus* from urban settlements [26,27], whereas the spread of *Ae. albopictus* has been associated with declines of *Ae. aegypti* in the Americas [28,29]. In the Indian Ocean region, *Ae. albopictus* was introduced several centuries ago [30] and in the Reunion Island, it was first recorded in 1913 [31]. On the island, this mosquito became the most common *Aedes* species [32] since the control program against malaria vectors in the 1950s that led to the confinement of *Ae. aegypti* in remote areas [33]. On Mayotte, *Ae. aegypti* was first recorded in 1943 [34] and *Ae. albopictus* was observed later, in 2001

**Table 3 Hatching characteristics (proportion of females with at least one egg hatched and hatching rate per female)**

Viral strain	Status	Proportion of females with at least one egg hatched (%)						Hatching rate per female ± SD (N)					
		<i>Ae. aegypti</i> Mayotte		<i>Ae. albopictus</i> Mayotte		<i>Ae. albopictus</i> Reunion		<i>Ae. aegypti</i> Mayotte		<i>Ae. albopictus</i> Mayotte		<i>Ae. albopictus</i> Reunion	
		1	2	1	2	1	2	1	2	1	2	1	2
	NI	70 (10)	50 (22)	52 (86)	51 (73)	50 (24)	80 (79)	23.9 ± 25.7 (10)	29 ± 32.4 (22)	8.4 ± 13.1 (73)	9.5 ± 14.6 (80)	15.2 ± 22.2 (24)	36.1 ± 31.0 (83)
E1-226A	NDINF	100 (2)	50 (4)	50 (6)	38 (16)	55 (11)	69 (13)	44.1 ± 46.6 (2)	36.6 ± 43.5 (4)	6.6 ± 10 (16)	12.9 ± 15.5 (22)	23.2 ± 31.7 (11)	29.1 ± 32.5 (13)
	DINF	57 (7)	71 (14)	45 (76)	45 (96)	45 (62)	63 (65)	21.1 ± 22.4 (7)	32.7 ± 31.1 (14)	9.9 ± 17.7 (96)	13.5 ± 15.5 (82)	17.3 ± 26.3 (62)	32.6 ± 33.6 (86)
E1-226V	NDINF	33 (6)	100 (3)	42 (19)	54 (24)	33 (9)	75 (8)	8.5 ± 16.2 (6)	51.3 ± 35.7 (3)	9.5 ± 12.1 (24)	19.8 ± 22.5 (39)	12.0 ± 23.6 (9)	35.2 ± 37.1 (8)
	DINF	31 (26)	76 (17)	44 (73)	51 (91)	65 (43)	73 (81)	5.9 ± 13.0 (26)	33.5 ± 29.7 (17)	10.9 ± 16.2 (91)	19.6 ± 20.2 (74)	30.1 ± 28.7 (43)	40.1 ± 34.0 (89)

The table refers to the hatching characteristics of *Ae. aegypti* and *Ae. albopictus* from Mayotte and the Reunion Island infected with two CHIKV strains: CHIKV E1-226A and CHIKV E1-226V. N corresponds to the number of female analysed, SD to the standard deviation, 1 and 2 to respectively, trial 1 and trial 2, DINF to females with disseminated infection, NDINF to females with non-disseminated infection, and NI to non-infected females.

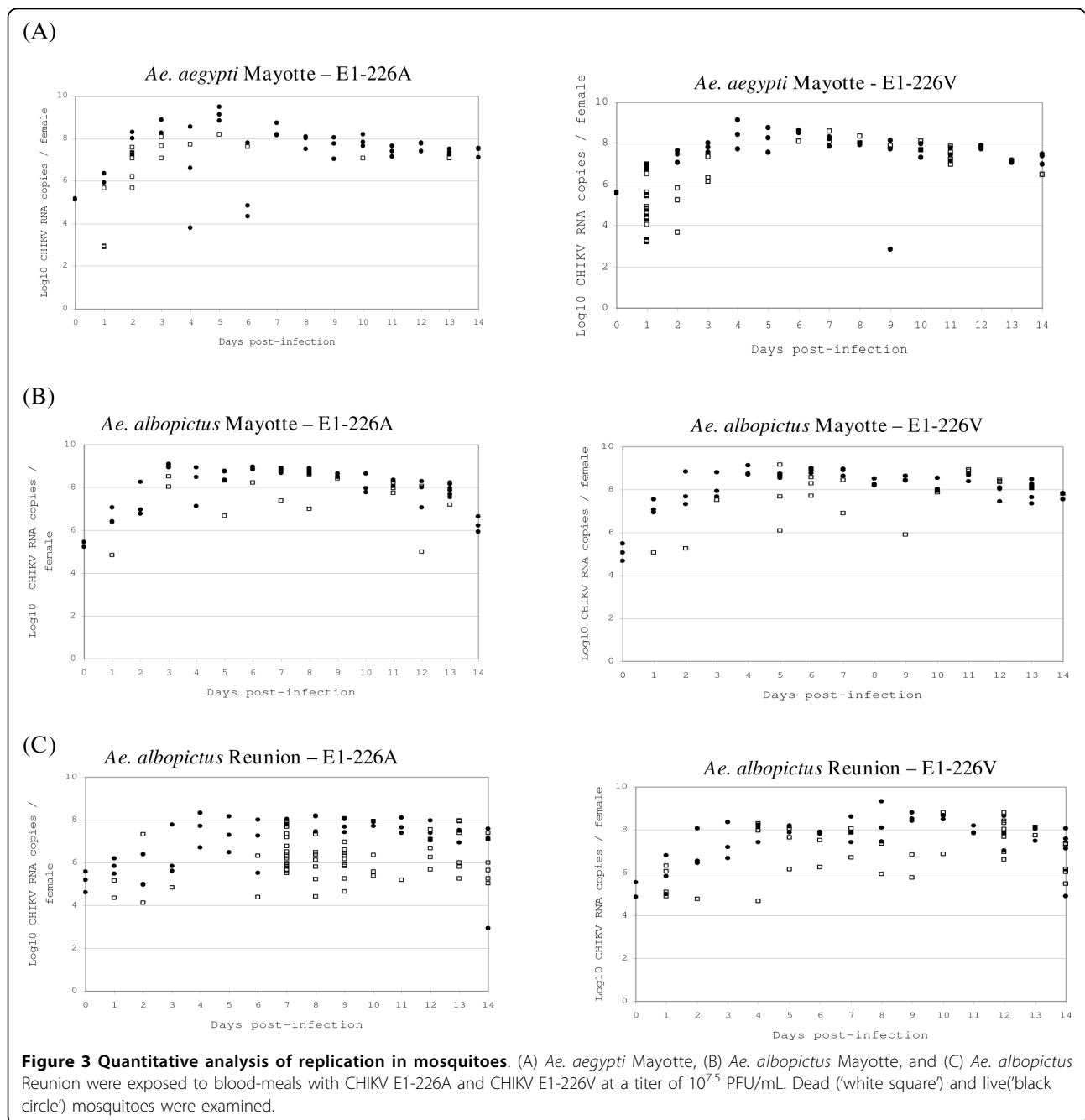
[35]. Larvae of both species could be found in artificial containers making inter-specific resource competition possible [36,37]. *Ae. albopictus* predominates in domestic habitats in Mayotte [38].

The CHIKV outbreak began in Kenya in 2004, and subsequently spread to the islands of the Indian Ocean [39]. A new strain of CHIKV emerged that carried a point mutation, which changes the amino acid at position 226 in the E1 envelope glycoprotein from an alanine to a valine [15]. This single mutation has increased the vector competence of *Ae. albopictus* for CHIKV [16,40]. This increased transmissibility of CHIKV is one of the hypotheses evoked to explain the expansion of CHIKV transmission into new regions such as Madagascar [41] and Cameroon [11] in 2006, and India [8], Italy [13] and Gabon [12] in 2007. Prior to these recent CHIKV outbreaks, *Ae. aegypti* had been considered the primary epidemic vector of CHIKV and *Ae. albopictus*, a secondary vector. A single E1-A226V mutation was sufficient to increase the ability of CHIKV to infect *Ae. albopictus* modifying the virus infectivity for a vector species other than the typical *Ae. aegypti* vector. Although the mutation confers a selective advantage in *Ae. albopictus*, there was no corresponding advantage in *Ae. aegypti*. Our results showed that *Ae. aegypti* Mayotte was similarly susceptible to both viral strains, whereas *Ae. albopictus* Mayotte and *Ae. albopictus* Reunion were more susceptible to the CHIKV E1-226V than to the CHIKV E1-226A strain (Figure 1). This may explain the predominance of E1-226V in countries where *Ae. albopictus* is considered to be the main vector species. At a titer of  $10^{7.5}$  PFU/mL, E1-226V virus was disseminated more effectively by *Ae. albopictus* (Mayotte and Reunion) than by *Ae. aegypti* (Mayotte). Infection of *Ae.*

*aegypti* Mayotte requires that the CHIKV blood-meal titers are significantly higher than for infection of *Ae. albopictus* (Mayotte and Reunion), which suggests that once introduced, E1-226V would be positively selected by *Ae. albopictus*.

As an intracellular parasite, CHIKV can mediate changes in host life-history traits. Two sorts of mechanisms could be proposed. On one hand, the use of host resources to maintain viral replication can lead to modifications of resource allocation as pathogenic effects. On the other hand, life-history modifications may be responses of the host to counterbalance the negative effects of parasitism. By reacting to the parasite, the host reduces the effect of infection on its fitness [42]. We have shown that replication of CHIKV in *Aedes* mosquitoes is intensive, e.g. 1,000 more viral particles in females from day 3 pi, and saliva became infectious from two days pi [17]. In the present work, we have analyzed the effects of CHIKV replication on several life-history traits of *Aedes* mosquitoes related to resource allocation, and only found significant modifications in *Ae. albopictus* from the Reunion Island. Thus CHIKV infection has a significant effect on the time until death and egg laying. Moreover, such negative effects were independent of the viral strain: CHIKV E1-226A and CHIKV E1-226V displayed similar effects. Nevertheless, aside from CHIKV infection, *Ae. albopictus* from the Reunion Island better survived in BSL-3 laboratory conditions than the two other mosquito strains. Regardless, infection by CHIKV has a negative impact on the survival of *Ae. albopictus* from the Reunion Island (Figure 2C). Lifespan was shortened by 6-9 days when mosquitoes were infected with CHIKV E1-226A or CHIKV E1-226V. Moreover, by shortening





the time from blood-feeding to laying, CHIKV-infected *Ae. albopictus* from the Reunion Island allocates an increased reproduction investment to laying eggs before death. Thus only limited consequences may affect vector dynamics, as other factors dictating oviposition (the number of eggs laid per mosquito) and hatching (the proportion of females with at least one egg hatched and hatching rate) characteristics were only slightly altered by infection. Such earlier reproduction has been reported in other animal-parasite systems [43,44].

Infection by a pathogen may modify resource distribution: infected hosts will allocate more resources to reproduction, subtracting them from those attributed to growth and survival [45,46]. Nevertheless, the question remains as to why this phenomenon is not species-specific. Effectively, *Ae. albopictus* from Mayotte did not exhibit the same pattern. One explanation could be that *Ae. albopictus* assumed to be introduced into the Reunion Island by immigrants from Asia in the 17<sup>th</sup>-18<sup>th</sup> centuries [47] has been subjected to major

bottlenecks that cause strong genetic divergence from the Asian mosquitoes [48]. Thus *Ae. albopictus* from the Reunion Island may be genetically different from *Ae. albopictus* detected in Mayotte in 2001 [35].

From our results, a very provocative scenario could be envisioned concerning CHIKV evolution during the Indian Ocean outbreak. Since Mayotte is located halfway between Kenya, where the outbreak began, and the Reunion Island, where the CHIKV E1-A226V was first reported, this new variant could have already been present in Mayotte. In Mayotte, no data pertaining to CHIKV sequences was available before 2006 and CHIKV E1-226V was only identified after this time [15]. In Mayotte, both vectors co-exist [35] and we clearly showed that *Ae. aegypti* Mayotte was similarly susceptible to both viral strains while *Ae. albopictus* Mayotte was more susceptible to the CHIKV E1-226V strain. The mutation could therefore be interpreted as a positive selection phenomenon for better transmission by *Ae. albopictus*. In addition, we found that infection with CHIKV E1-226A or CHIKV E1-226V did not induce significant consequences on either species from Mayotte. Nevertheless, on the Reunion Island, the unique vector *Ae. albopictus*, maintains a better transmission of CHIKV E1-226V compared to CHIKV E1-226A. However, an important decrease in the lifespan of *Ae. albopictus* from the Reunion Island was reported as a consequence of infection followed by changes in mosquito reproduction. We propose that CHIKV E1-226A was maintained on Mayotte by both *Ae. aegypti* and *Ae. albopictus*. Later, the introduction of CHIKV E1-226A onto the Reunion Island where *Ae. aegypti* is rare, would have led to the selection of the new variant by *Ae. albopictus*. Since then, CHIKV E1-226V has invaded some neighboring islands where *Ae. albopictus* is present. Thus, CHIKV E1-226V probably reached Mayotte later, after having been selected in the Reunion Island. In addition, the role of other mutations in the viral genome in the adaptation of CHIKV to *Aedes* mosquitoes could not be completely excluded [49]. Furthermore, some characteristics of the *Ae. albopictus* bio-ecology might have favored CHIKV transmission in urban areas: high anthropophily and high population densities.

## Conclusion

Our results are in agreement with modifications in life-history traits reported for parasitized animals. We found that the species *Ae. albopictus* was more susceptible to the CHIKV E1-226V than to the CHIKV E1-226A strain which assumes that once introduced, E1-226V would be positively selected by *Ae. albopictus*. Nevertheless, CHIKV infection only induced negative impacts on survival and on egg hatching characteristics of *Ae. albopictus* from the Reunion Island which led us to suggest

that *Ae. albopictus* from the Reunion Island might be less adapted to CHIKV than mosquitoes from Mayotte. However, the physiological mechanisms underlying this pattern are unknown. Nevertheless, the outcome of the pathogen/host interaction often involves the immune system that is restricted to the innate immune function in insects. This is an effective mechanism to provide protection against a wide variety of pathogens including viruses. We have evaluated the number of viral RNA copies in mosquitoes (live females sacrificed every day and also dead females; see Figure 3) and found that females that died a few days after infection did not host more viral particles than did live females. Thus we might suggest that mosquitoes did not die following an excess of viral replication but more probably when mounting an immune response. Modifications of life-history traits and/or mounting an efficient antiviral response should be among strategies developed by the vector to optimize its fitness.

## Methods

### Mosquitoes

Mosquitoes were from two islands in the Indian Ocean: (i) Mayotte (Petite-Terre) where *Ae. aegypti* Mayotte and *Ae. albopictus* Mayotte were collected in December 2006 and (ii) the Reunion Island (Providence) where *Ae. albopictus* Reunion was collected in March 2007. In Mayotte, *Ae. albopictus* was detected in 2000 [35] and this is now the most frequent *Aedes* species encountered in urban and suburban habitats on this island [38]. On the Reunion Island, *Ae. albopictus* predominates in urban settings, while *Ae. aegypti* is present as residual non anthropophilic populations [33]. Experiments were carried out with the 3<sup>rd</sup>, 6<sup>th</sup> and 2<sup>nd</sup> laboratory raised generations for *Ae. aegypti* Mayotte, *Ae. albopictus* Mayotte, and *Ae. albopictus* Reunion, respectively. Mosquitoes were maintained in insectariums at  $28 \pm 1^\circ\text{C}$  with 80% relative humidity and a 16 h:8 h photoperiod. Batches of eggs were put to hatch and pools of 200 larvae were reared in pans containing 1 liter of water supplemented with 1-2 tablets of cat food. Only females were used for oral infections. This rearing procedure was used in order to obtain females of similar size, making them likely to take equal quantities of blood; this was checked using a procedure for measuring blood-meal size [50]. The females obtained were assumed to ingest a similar number of viral particles [51,52]. Adults were fed with a 10% sucrose solution until infection.

### CHIKV strains

Two CHIKV strains were isolated from human sera of patients on the Reunion Island: strain E1-226A was isolated in June 2005 and strain E1-226V in November 2005; these two strains differed mainly by a substitution

of alanine by valine at position 226 of the E1 glycoprotein, in a region of the protein that is predicted to interact with the target membrane [15]. The two CHIKV strains were provided by the French National Reference Center for Arboviruses at the Institut Pasteur, which had obtained the verbal consent from the patients who provided blood sera. Stocks of both viral strains were produced on *Ae. albopictus* C6/36 cells that were infected at a multiplicity of infection (moi) of 0.1 PFU (plaque forming units)/cell for 48h at 27°C. Supernatant fluids were collected and viral titers estimated by serial 10-fold dilutions on Vero cells. Each virus stock was divided into aliquots and stored at -80°C until use.

#### Oral infections of mosquitoes

For each mosquito species, batches of 60 one-week-old females were isolated in plastic boxes and starved for 24 hours before infection. Then they were allowed to feed for 15 min through a chicken skin membrane, which covered the base of a feeder that contained the infectious meal maintained at 37°C. The blood-meal was composed of a virus suspension diluted (1:3) in washed rabbit erythrocytes with adenosine triphosphate ( $5 \times 10^3$  M).

#### Susceptibility of *Aedes* species to CHIKV strains

To determine the susceptibility of *Ae. aegypti* Mayotte and *Ae. albopictus* (Mayotte and Reunion) to CHIKV E1-226A and CHIKV E1-226V, we exposed batches of mosquitoes to a 10-fold dilution of viral stocks ranging from  $10^{4.5}$  to  $10^{8.5}$  PFU/mL. Only fully engorged mosquitoes were transferred to small cardboard containers and maintained at 28°C for 14 days. At the end of this period when optimal dissemination of the virus is obtained [16], mosquitoes that had survived were sacrificed and tested for the presence of CHIKV by immunofluorescence assay (IFA) on head squashes [53]. To this end, the head was severed from the body, and sets of 10-15 heads were placed on one slide. A second slide was placed on this to squash the heads. Slides were then immersed in acetone for 20 min at -20°C. Head squashes were incubated for 30 min at 37°C with a first anti-CHIKV antibody prepared from a mouse ascite diluted in PBS 1× (1:200). After three washes in PBS 1×, the squashes were incubated with a goat anti-mouse conjugate diluted in PBS 1× (1:80) supplemented with Evans blue. Slides were observed under an epifluorescence microscope. In replication-negative mosquitoes, the infection is limited to the midgut and head tissues appear in red. In replication-positive mosquitoes, the virus spreads beyond the midgut and infects secondary organs including the salivary glands. In such mosquitoes, the head tissues appear in green. A significant correlation has been found between the presence of virus in the head and the ability of a female mosquito to excrete virus through saliva [17].

Dissemination of the virus could be achieved within two days. The disseminated infection rate corresponds to the number of females with disseminated infection (mosquitoes with head tissues in green) among surviving females 14 days after an infectious meal.

#### Mosquito life-history traits

To determine whether infection by CHIKV has an impact on mosquito life-history traits, other batches of mosquitoes of each mosquito species were allowed to feed on three different blood-meals: two infectious blood-meals containing CHIKV E1-226A or CHIKV E1-226V, and one non-infectious blood-meal that used Dulbecco's modified Eagle's medium instead of the virus suspension. Females selected at this stage had been inseminated by males after emergence in cages. The titer of the infectious blood-meal was  $10^{7.5}$  PFU/mL [16]. Fully engorged mosquitoes were individually isolated in 50 mL plastic tubes where a piece of wet cotton was placed at the bottom as support for oviposition. Mosquitoes maintained at 28°C were fed with a 10% sucrose solution until death. For each combination of CHIKV strain and mosquito species, the experiment was conducted twice; the number of mosquitoes considered in each experiment was variable depending on the number of engorged mosquitoes obtained.

For each mosquito, three traits were examined: survival, oviposition and egg hatching. Survival was evaluated by scoring the number of dead mosquitoes every day, to estimate mosquito lifespan. The infection status of each mosquito was determined at the date of death by IFA on head squashes: (i) a head found to be positive by IFA corresponded to a mosquito with a disseminated infection (DINF) - after crossing the midgut, the virus had disseminated inside the hemocele, colonizing different organs including the central nervous system; (ii) a negative head according to IFA corresponded to a mosquito with a non-disseminated infection (NDINF) - the virus did not cross the midgut and was retained in the epithelium cells. All mosquitoes have ingested infectious viral particles as  $\sim 10^5$  PFU have been detected in engorged females sacrificed one hour after ingestion of the infectious blood-meal (data not shown). Non-infected mosquitoes named (NI) had ingested a non-infectious blood-meal. Oviposition was examined according to three parameters: (i) the time to first laying after the blood-meal, which allows the duration of the gonotrophic cycle of each mosquito to be determined, (ii) the total number of eggs laid per mosquito, (iii) the time between the first oviposition and mosquito death.

Eggs were stored at 28°C until hatching. Hatching was described by assessing two parameters: (i) the proportion of mosquitoes among those which have laid eggs that have at least one egg hatched and (ii) the hatching

rate, which corresponds to the proportion of eggs hatched among those laid per mosquito. Eggs were put to hatch by immersion in dechlorinated tap water in an insectarium maintained at 28°C.

#### Quantitative RT-PCR

To determine whether mosquito mortality was related to an over-replication of CHIKV, three living mosquitoes, and dead mosquitoes if present, were collected every day. For each mosquito, the total RNA was extracted using a nucleospin RNA II kit (Macherey-Nagel) according to the manufacturer's instruction [16]. To construct the standard curve, a synthetic CHIKV RNA transcript was generated. A PCR product containing the target region was prepared using CHIKV, and this was cloned into the pCR II TOPO vector (Invitrogen). The product amplified using vector-specific primers was purified using a PCR Purification Kit (Qiagen). RNA transcripts were produced *in vitro* using the Ribomax™ Large Scale RNA Production System (Promega) appropriate for either SP6 or T7 RNA polymerase. The transcript size was 1,356 bp for both CHIKV E1-226A and CHIKV E1-226V. Residual DNA was eliminated by several DNase treatments (Turbo DNA-free (Ambion)). After quantification using a spectrophotometer, the RNA transcript solution was stored at -80°C.

One-step quantitative RT-PCR was performed in a volume of 25 µl containing 3 µl RNA template, 12.5 µl 2 × Brilliant SYBR Green I QPCR Master Mix (Stratagene), 1 µl sense (2.5 µM) and 1 µl anti-sense (2.5 µM) primers, 0.25 µl Fluorescein (1 µM), and 0.0625 µl Stratascript RT/RNase block enzyme. Primers were selected in the E2 structural protein regions: sense Chik/E2/9018/+ (CACCGCCGCAACTACCG) and anti-sense Chik/E2/9235/- (GATTGGTGACCGCGGCA). The amplification program in a i-Cycler™ (Biorad) included a reverse transcription step at 50°C for 30 min, an inactivation of RT/RNase enzyme step at 95°C for 10 min followed by 40 cycles of 95°C 30 s, 56°C 1 min, 72°C 30 s, a step at 95°C for 1 min, and 81 cycles of 55°C (+0.5°C/cycle) 30 s. The size of the amplification product was 217 bp. PCR was performed in triplicate for each mosquito. Signals were normalized to the standard curve obtained using serial dilutions of synthetic RNA transcript. Normalized data were used to measure the number of RNA copies in infected mosquitoes according to  $\Delta C_t$  analysis. One Log of PFU corresponds to 1-2 Log RNA virus (unpublished data).

#### Statistical analysis

For each mosquito species, disseminated infection rates were compared according to CHIKV and viral titers using a  $\chi^2$  test, the Fisher's exact test being used in the case of small sample sizes.

The survival rate for each trial and each mosquito species according to the virus (NI, CHIKV E1-226A and CHIKV E1-226V) were described using Kaplan-Meier survival curves. These survival curves were then compared using the logrank test. For each mosquito species, the effects on survival of a 5-category covariate that combines virus and infection status (NI, NDINF, DINF) was investigated, after adjustment to the trial, using an accelerated failure time model assuming that the survival time was log-normally distributed. Time ratios (95% confidence intervals) were estimated and tested using Wald's parametric test. This model was chosen as the proportional assumption model required by the more classical Cox model would not have been valid.

For each mosquito species infected (or non-infected) by a given virus, the time to the first egg laying was also described using Kaplan-Meier estimates, and curves were compared using the logrank test. We also chronicled the time between the first oviposition and mosquito death, using Kaplan-Meier estimates, and compared these curves using the logrank test. Then, the effect on the total number of eggs laid of the covariance that combined virus and infection status (NI, NDINF, DINF) was investigated using a negative binomial regression model. This model is relevant when analyzing incidence as it enables the control according to lifespan, and it provides incidence rate ratios and their 95% confidence intervals. The significance level of the covariate was tested using Wald's test.

For each mosquito species, the hatching capacity was studied through an assessment of the proportion of mosquitoes with at least one hatched egg. The proportions of mosquitoes in each of the five categories defined by virus and infection status were compared using a Fisher's exact test. Hatching rates, i.e. the proportion of hatched eggs among all eggs laid by a mosquito, were compared using analysis of variance, according to virus and infection status.

All statistical analyses were performed using the STATA software (StataCorp LP, Texas, USA).

#### Acknowledgements

We are grateful to Julien Thiria and Jean-Sébastien Dehecq from the DRASS in the Reunion, Didier Fontenille and Christophe Paupy from the IRD and Hélène Delatte from the CIRAD for providing mosquitoes, the French National Reference Center for Arbovirus for CHIKV strains, and the Laboratory for Urgent Response to Biological Threats at the Pasteur Institute for technical help. We thank Marie Vazeille, Valérie Choumet, Marie Flamand, and Yannis Michalakis for valuable discussions. We are grateful to Katherine Kean for correcting the manuscript and François Rougeon for critical reading. We also wish to thank Michèle Bouloy and Félix Rey for their support. EM has received financial support from the "Fondation Duranton de Magny". This work was supported by the Institut Pasteur (PTR n°201) and the ANR (Agence Nationale de la Recherche), project EntomoChik.

#### Author details

<sup>1</sup>Génétique moléculaire des Bunyavirus, Institut Pasteur, 25-28 rue du Dr Roux, 75724 Paris cedex 15, France. <sup>2</sup>Unité de Recherche et d'Expertise Epidémiologie des Maladies Emergentes, 25-28 rue du Dr Roux, 75724 Paris cedex 15, France.

#### Authors' contributions

EM performed the research. SM helped to design the study. YM analyzed the data and helped to draft the manuscript. ABF conceived the study, analyzed the data, and wrote the manuscript. All authors read and approved the final version of the manuscript.

Received: 27 November 2009 Accepted: 12 March 2010

Published: 12 March 2010

#### References

1. Robinson MC: An epidemic of virus disease in Southern Province, Tanganyika territory in 1952-1953. I. Clinical features. *Trans R Soc Trop Med Hyg* 1955, **49**:28-32.
2. Ross RW: The Newala Epidemic, III. The virus: isolation, pathogenic properties and relationship to the epidemic. *J Hyg* 1956, **54**:177-191.
3. Jupp PG, Kemp A: What is the potential for future outbreaks of Chikungunya, dengue and yellow fever in Southern Africa? *S Afr Med J* 1996, **86**:35-37.
4. Diallo M, Thonnon J, Traoré-Lamizana M, Fontenille D: Vectors of Chikungunya virus in Senegal: current data and transmission cycles. *Am J Trop Med Hyg* 1999, **60**:281-286.
5. Lam SK, Chua KB, Hooi PS, Rahimah MA, Kumari S, Tharmaratnam M, Chuah SK, Smith DW, Sampson IA: Chikungunya infection - an emerging disease in Malaysia. *Southeast Asian J Trop Med Public Health* 2001, **32**:447-451.
6. Laras K, Sukri NC, Larasati RP, Bangs MJ, Kosim R, Djauzi W, Wandra T, Master J, Kosasih H, Hartati S, Beckett C, Sedyaningih ER, Beecham HJ, Corwin AL: Tracking the re-emergence of epidemic Chikungunya virus in Indonesia. *Trans R Soc Trop Med Hyg* 2005, **99**:128-141.
7. Serгон K, Njuguna C, Kalani R, Ofula V, Onyango C, Konongoi LS, Bedno S, Burke H, Dumilla AM, Komde J, Njenga MK, Sang R, Breiman RF: Seroprevalence of Chikungunya virus (CHIKV) infection on Lamu Island, Kenya, October 2004. *Am J Trop Med Hyg* 2008, **78**:333-337.
8. Kumar NP, Joseph R, Kamaraj T, Jambulingam P: A226V mutation in virus during the 2007 chikungunya outbreak in Kerala, India. *J Gen Virol* 2008, **89**:1945-1948.
9. Noridah O, Paranthaman V, Nayar SK, Masliza M, Ranjit K, Norizah I, Chem YK, Mustafa B, Kumarasamy V, Chua KB: Outbreak of chikungunya due to virus of Central/East African genotype in Malaysia. *Med J Malaysia* 2007, **62**:323-328.
10. Soon YY, Junaidi I, Kumarasamy V, Chem YK, Juliana R, Chua KB: Chikungunya virus of Central/East African genotype detected in Malaysia. *Med J Malaysia* 2007, **62**:214-217.
11. Peyrefitte CN, Rousset D, Pastorino BA, Pouillot R, Bessaud M, Tock F, Mansaray H, Merle OL, Pascual AM, Paupy C, Vessiere A, Imbert P, Tchendjou P, Durand JP, Tolou HJ, Grandadam M: Chikungunya virus, Cameroon, 2006. *Emerg Infect Dis* 2007, **13**:768-771.
12. Peyrefitte CN, Bessaud M, Pastorino BA, Gravier P, Plumet S, Merle OL, Moltini I, Coppin E, Tock F, Daries W, Ollivier L, Pages F, Martin R, Boniface F, Tolou HJ, Grandadam M: Circulation of Chikungunya virus in Gabon, 2006-2007. *J Med Virol* 2008, **80**:430-433.
13. Rezza G, Nicoletti L, Angelini R, Romi R, Finarelli AC, Panning M, Cordioli P, Fortuna C, Boros S, Magurano F, Silvi G, Angelini P, Dottori M, Ciufolini MG, Majori GC, Cassone A, CHIKV study group: Infection with chikungunya virus in Italy: an outbreak in a temperate region. *Lancet* 2007, **370**:1840-1846.
14. Gratz NG: Critical review of the vector status of *Aedes albopictus*. *Med Vet Entomol* 2004, **18**:215-227.
15. Schuffenecker I, Iteman I, Michault A, Murri S, Frangeul L, Vaney MC, Lavenir R, Pardigon N, Reynes JM, Pettinelli F, Biscornet L, Diancourt L, Michel S, Duquerroy S, Guignon G, Frenkiel MP, Bréhin AC, Cubito N, Desprès P, Kunst F, Rey FA, Zeller H, Brisse S: Genome microevolution of Chikungunya viruses causing the Indian Ocean outbreak. *PLoS Med* 2006, **3**:e263.
16. Vazeille M, Moutailler S, Coudrier D, Rousseaux C, Khun H, Huerre M, Thiria J, Dehecq JS, Fontenille D, Schuffenecker I, Despres P, Failloux AB: Two Chikungunya isolates from the outbreak of La Reunion (Indian Ocean) exhibit different patterns of infection in the mosquito, *Aedes albopictus*. *PLoS ONE* 2007, **2**:e1168.
17. Dubrulle M, Mousson L, Moutailler S, Vazeille M, Failloux AB: Chikungunya virus and *Aedes* mosquitoes: saliva is infectious as soon as two days after oral infection. *PLoS ONE* 2009, **4**:e5895.
18. Turell MJ, Gargan TP II, Bailey BL: *Culex pipiens* (Diptera: Culicidae) morbidity and mortality associated with Rift Valley fever virus infection. *J Med Entomol* 1985, **22**:332-337.
19. Grimstad PR, Ross QE, Graig GB Jr: *Aedes triseriatus* (Diptera: Culicidae) and LaCrosse virus. II. Modification of mosquito feeding behavior by virus infection. *J Med Entomol* 1980, **17**:1-7.
20. Faran ME, Turell MJ, Romoser WS, Routier RG, Gibbs PH, Cannon TL, Bailey CL: Reduced survival of adult *Culex pipiens* infected with Rift Valley fever virus. *Am J Trop Med Hyg* 1987, **37**:403-409.
21. Turell MJ: Virus-dependent mortality in Rift Valley fever, eastern equine encephalomyelitis, and chikungunya virus-inoculated mosquito (Diptera: Culicidae) larvae. *J Med Entomol* 1992, **29**:792-795.
22. Scott TW, Lorenz LH: Reduction of *Culiseta melanura* fitness by eastern equine encephalomyelitis virus. *Am J Trop Med Hyg* 1998, **59**:341-346.
23. Reiter P: *Aedes albopictus* and the world trade in used tires, 1988-1995: the shape of things to come? *J Am Mosq Control Assoc* 1998, **14**:83-94.
24. Tabachnick WJ, Powell JR: A world-wide survey of genetic variation in the yellow fever mosquito, *Aedes aegypti*. *Genet Res* 1979, **34**:215-229.
25. Failloux AB, Vazeille M, Rodhain F: Geographic genetic variation in populations of the dengue virus vector *Aedes aegypti*. *J Mol Evol* 2002, **55**:653-663.
26. Rudnick A, Hammon W: Newly recognized *Aedes aegypti* problems in Manila and Bangkok. *Mosq News* 1960, **20**:247-249.
27. Chan KL, Chan YC, Ho BC: *Aedes aegypti* (L.) and *Aedes albopictus* (Skuse) in Singapore City. 4. Competition between species. *Bull World Health Org* 1971, **44**:643-649.
28. O'Meara GF, Evans LF Jr, Gettman AD, Cuda JP: Spread of *Aedes albopictus* and decline of *Ae. aegypti* (Diptera: Culicidae) in Florida. *J Med Entomol* 1995, **32**:554-562.
29. Lima-Camara TN, Honorio NA, Lourenço-de-Oliveira R: Frequency and spatial distribution of *Aedes aegypti* and *Aedes albopictus* (Diptera, Culicidae) in Rio de Janeiro, Brazil. *Cad Saude Publica* 2006, **22**:2079-2074.
30. Hawley AH: The biology of *Aedes albopictus*. *J Am Mosq Control Assoc* 1988, **4**:1-40.
31. Edwards FW: Notes on the mosquitoes of Madagascar, Mauritius and Reunion. *Bull Entomol Res* 1920, **11**:133-138.
32. Delatte H, Dehecq JS, Thiria J, Domerg C, Paupy C, Fontenille D: Geographic distribution and developmental sites of *Aedes albopictus* (Diptera: Culicidae) during a Chikungunya epidemic event. *Vector Borne Zoonotic Dis* 2008, **8**:25-34.
33. Salvan M, Mouchet J: *Aedes albopictus* et *Aedes aegypti* à l'île de la Réunion. *Ann Soc Belg Med Trop* 1994, **74**:323-326.
34. McCarthy DD, Brent RH: An account of an outbreak of dengue fever in Dzaoudzi, Comoros Islands, January 1943. *East Afr Med J* 1943, **20**:293-298.
35. Girod R: First record of *Aedes albopictus* in Mayotte Island, Comoros archipelago. *Parasite* 2004, **11**:74.
36. Juliano SA, Lounibos LP, O'Meara GF: A field test for competitive effects of *Aedes albopictus* on *Aedes aegypti* in South Florida: differences between sites of coexistence and exclusion? *Oecologia* 2004, **139**:583-593.
37. Reiskind MH, Lounibos LP: Effects of intraspecific larval competition on adult longevity in the mosquitoes *Aedes aegypti* and *Aedes albopictus*. *Med Vet Entomol* 2009, **23**:62-68.
38. Bagny L, Delatte H, Elissa N, Quilici S, Fontenille D: *Aedes* (Diptera: Culicidae) vectors of arboviruses in Mayotte (Indian Ocean): distribution area and larval habitats. *J Med Entomol* 2009, **46**:198-207.
39. Chretien JP, Anyamba A, Bedno SA, Breiman RF, Sang R, Serгон K, Powers AM, Onyango CO, Small J, Tucker CJ, Linthicum KJ: Drought-associated chikungunya emergence along coastal East Africa. *Am J Trop Med Hyg* 2007, **76**:405-407.
40. Tsetsarkin KA, Vanlandingham DL, McGee CE, Higgs S: A single mutation in chikungunya virus affects vector specificity and epidemic potential. *PLoS Pathog* 2007, **3**:e201.

41. Ratsitorahina M, Harisoa J, Ratovonjato J, Biacabe S, Reynes JM, Zeller H, Raelina Y, Talarmin A, Richard V, Louis Soares J: **Outbreak of dengue and Chikungunya fevers, Toamasina, Madagascar, 2006.** *Emerg Infect Dis* 2008, **14**:1135-1137.
42. Hurd H: **Host fecundity reduction: a strategy for damage limitation?** *Trends Parasitol* 2001, **17**:363-368.
43. Polak M, Stamer WT: **Parasite-induced risk of mortality elevates reproductive efforts in male *Drosophila*.** *Proc R Soc Lond B Biol Sci* 1998, **265**:2197-2201.
44. Minchella DJ, Loverde PT: **A cost of increased early reproductive efforts in the snail *Biomphalaria glabrata*.** *Am Nat* 1981, **118**:876-881.
45. Hochberg ME, Michalakis Y, de Meeüs T: **Parasitism as a constraint on the rate of life-history evolution.** *J Evol Biol* 1992, **5**:491-504.
46. Michalakis Y, Hochberg ME: **Parasitic effects on host life-history traits - a review of recent Studies.** *Parasite* 1994, **1**:291-294.
47. Mattingly PF: **The subgenus *Stegomyia* (Diptera: Culicidae) in the Ethiopian region. II. Distribution of species confined to the East South African sub-region.** *Bull Br Mus* 1953, **3**:1-65.
48. Mousson L, Dauga C, Garrigues T, Schaffner F, Vazeille M, Failloux AB: **Phylogeography of *Aedes (Stegomyia) aegypti* (L.) and *Aedes (Stegomyia) albopictus* (Skuse) (Diptera: Culicidae) based on mitochondrial DNA variations.** *Genet Res* 2005, **86**:1-11.
49. Tsetsarkin KA, McGee CE, Volk SM, Vanlandingham DL, Weaver SC, Higgs S: **Epistatic roles of E2 glycoprotein mutations in adaption of chikungunya virus to *Aedes albopictus* and *Ae. aegypti* mosquitoes.** *PLoS ONE* 2009, **4**: e6835.
50. Briegel H, Lea AO, Klowden MJ: **Hemoglobinometry as a method for measuring blood meal sizes of mosquitoes (Diptera: Culicidae).** *J Med Entomol* 1979, **15**:235-238.
51. Baqar S, Hayes CG, Ahmed T: **The effect of larval rearing conditions and adult age on the susceptibility of *Culex tritaeniorhynchus* to infection with West Nile virus.** *Mosq News* 1980, **40**:165-171.
52. Grimstad PR, Haramis LD: ***Aedes triseriatus* (Diptera: Culicidae) and La Crosse virus. III. Enhanced oral transmission by nutrition -deprived mosquitoes.** *J Med Entomol* 1984, **21**:249-256.
53. Kuberski TT, Rosen L: **A simple technique for the detection of dengue antigen in mosquitoes by immunofluorescence.** *Am J Trop Med Hyg* 1977, **26**:533-537.

doi:10.1186/1472-6785-10-8

**Cite this article as:** Martin et al.: Differential responses of the mosquito *Aedes albopictus* from the Indian Ocean region to two chikungunya isolates. *BMC Ecology* 2010 **10**:8.

**Submit your next manuscript to BioMed Central  
and take full advantage of:**

- Convenient online submission
- Thorough peer review
- No space constraints or color figure charges
- Immediate publication on acceptance
- Inclusion in PubMed, CAS, Scopus and Google Scholar
- Research which is freely available for redistribution

Submit your manuscript at  
[www.biomedcentral.com/submit](http://www.biomedcentral.com/submit)

