



HAL
open science

Cell cycle regulation during early mouse embryogenesis.

Jérôme Artus, Michel Cohen-Tannoudji

► **To cite this version:**

Jérôme Artus, Michel Cohen-Tannoudji. Cell cycle regulation during early mouse embryogenesis.. *Molecular and Cellular Endocrinology*, 2008, 282 (1-2), pp.78-86. 10.1016/j.mce.2007.11.008 . pasteur-00385488

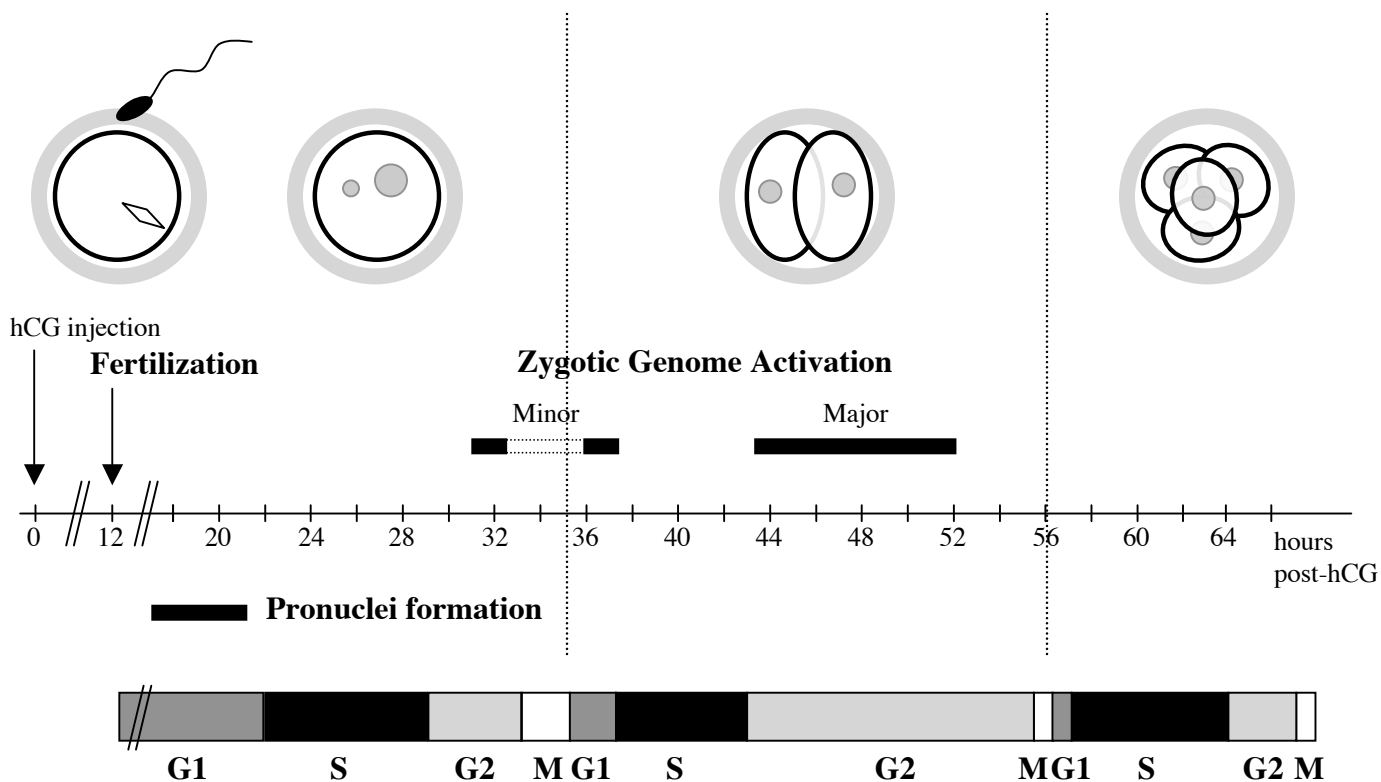
HAL Id: pasteur-00385488

<https://pasteur.hal.science/pasteur-00385488>

Submitted on 19 May 2009

HAL is a multi-disciplinary open access archive for the deposit and dissemination of scientific research documents, whether they are published or not. The documents may come from teaching and research institutions in France or abroad, or from public or private research centers.

L'archive ouverte pluridisciplinaire **HAL**, est destinée au dépôt et à la diffusion de documents scientifiques de niveau recherche, publiés ou non, émanant des établissements d'enseignement et de recherche français ou étrangers, des laboratoires publics ou privés.



hCG injection

Fertilization

Zygotic Genome Activation

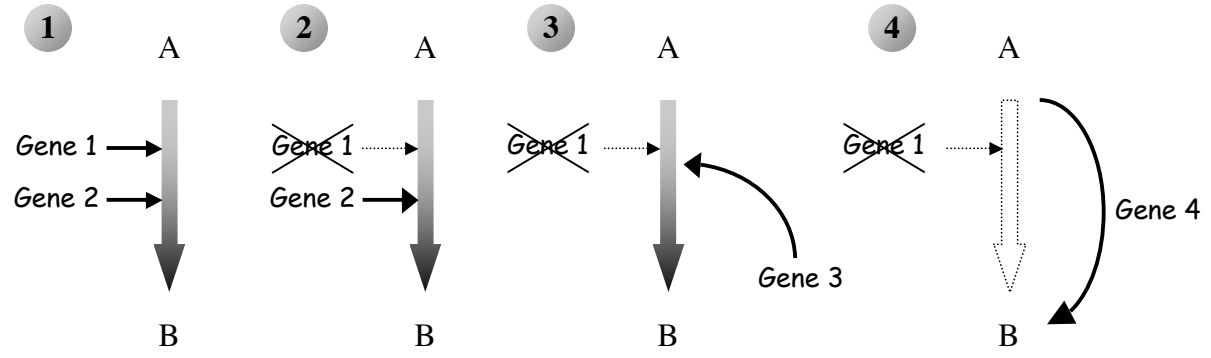
Minor

Major

0 12 20 24 28 32 36 40 44 48 52 56 60 64 hours post-hCG

Pronuclei formation

G1 S G2 M G1 S G2 MG1 S G2 M



1 st division				2 ^d division				3 rd division				4 th division				References
G1	S	G2	M	G1	S	G2	M	G1	S	G2	M	G1	S	G2	M	
4	4	3-5														[6]
9	6-7	5														[121]
8	4															[7]
	7-8															[122]
	4	8		0.5	7	11.5		1	7	2						[3]
	5	5		2	6	14		1	7							[3]
				1	4											[123]
				1	6	12										[10]
				1.3	6.1	15.4	1.3	1.6	7.4	0.5	1.2					[12]
								1	7	2-5		2	7	1-3		[124]
7	5.3	6.5		1.2	5.8	13.5		1.1	7.1	2.9		2	7	3		Average
19				20				11				11				Total lenght

Embryonic layer	G1	S	G2	M	Total	Reference
Ectoderm	0.25	4	0.5	1.5h	6.25	[24]
	1.5-2	3.5-4	<0.7	0.75h	7-7.5	[22]
					8.1	[23]
Mesoderm	0.7	5	0.5	1.3	7.5	[24]
	1.5-2	3.5-4	<0.7	0.75	7-7.5	[22]
					13.9	[23]
Proliferative zone	<0.5	2-2,75	<0.3	0.75	3-3.5	[22]
					3.6	[23]